

Twelfth Annual Catalog

1904-1905

Southwest
Alabama Agricultural
School



Evergreen, Alabama
NON CIRCULATING

A

S

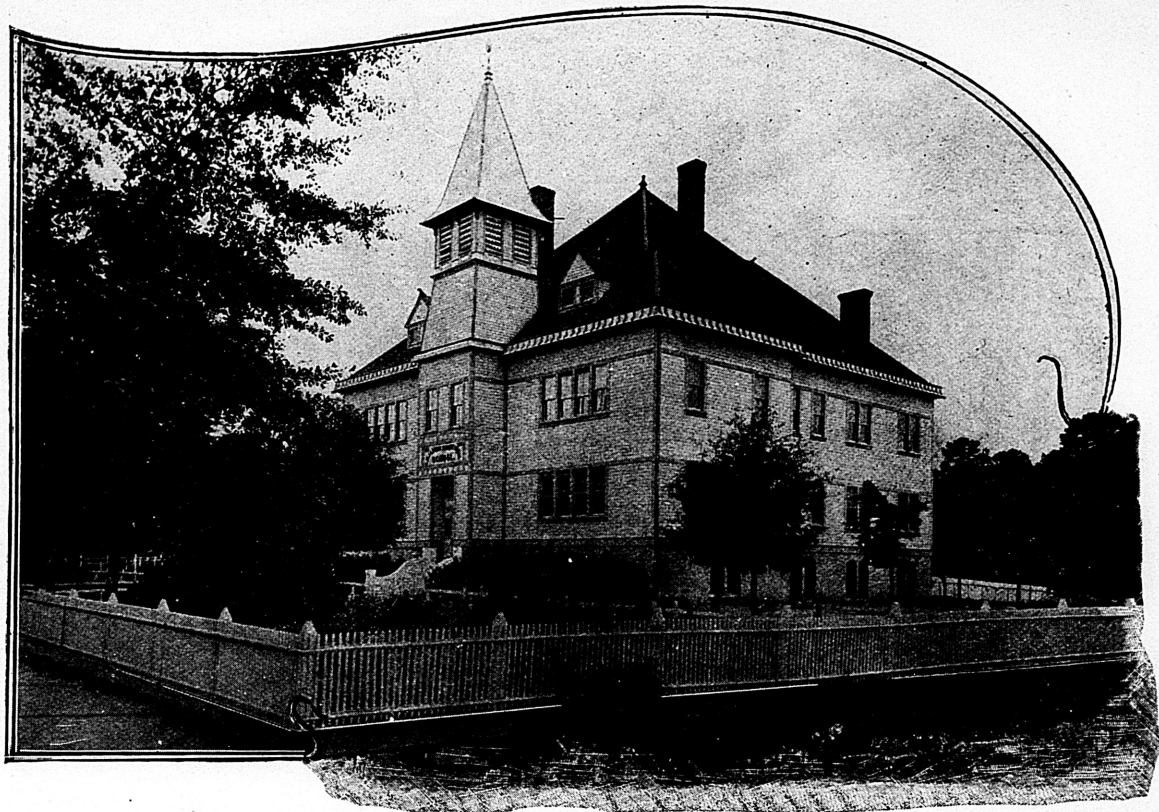
537

.A2

S69

v.12

1904-1905



SOUTHWEST ALABAMA AGRICULTURAL SCHOOL BUILDING.

TWELFTH ANNUAL CATALOG

OF THE

SOUTHWEST

ALABAMA AGRICULTURAL SCHOOL

1904-1905

THIRTEENTH ANNUAL ANNOUNCEMENT

FOR SCHOLASTIC YEAR

1905-1906

MONTGOMERY, ALA.:
THE BROWN PRINTING CO., PRINTERS AND BINDERS.
1905.

A
S
537
A2
569
v. 12
1904-1905

9/2/94

FACULTY.

J. A. LINER, A. M., PRESIDENT,
Latin and Psychology.

W. W. MONROE, A. B.,
Higher English, History, and French.

SYLVESTER GREER, B. S.,
Higher Mathematics.

LARKIN T. RHODES, B. S.,
Agriculture, and Allied Sciences.

MISS MINNIE DAVIS,
High School Department.

MISS ISABEL PHILLIPS,
Preparatory Department.

MISS WILLIE CUNNINGHAM,
Primary Department.

MISS MAMIE R. McLEMORE,
Music Department.

OFFICERS OF EXPERIMENT STATION.

J. A. Liner.....Director.
L. T. Rhodes.....Agriculturist.

AC 7408

THIRTEENTH ANNUAL ANNOUNCEMENT.

ESTABLISHMENT AND PURPOSE.

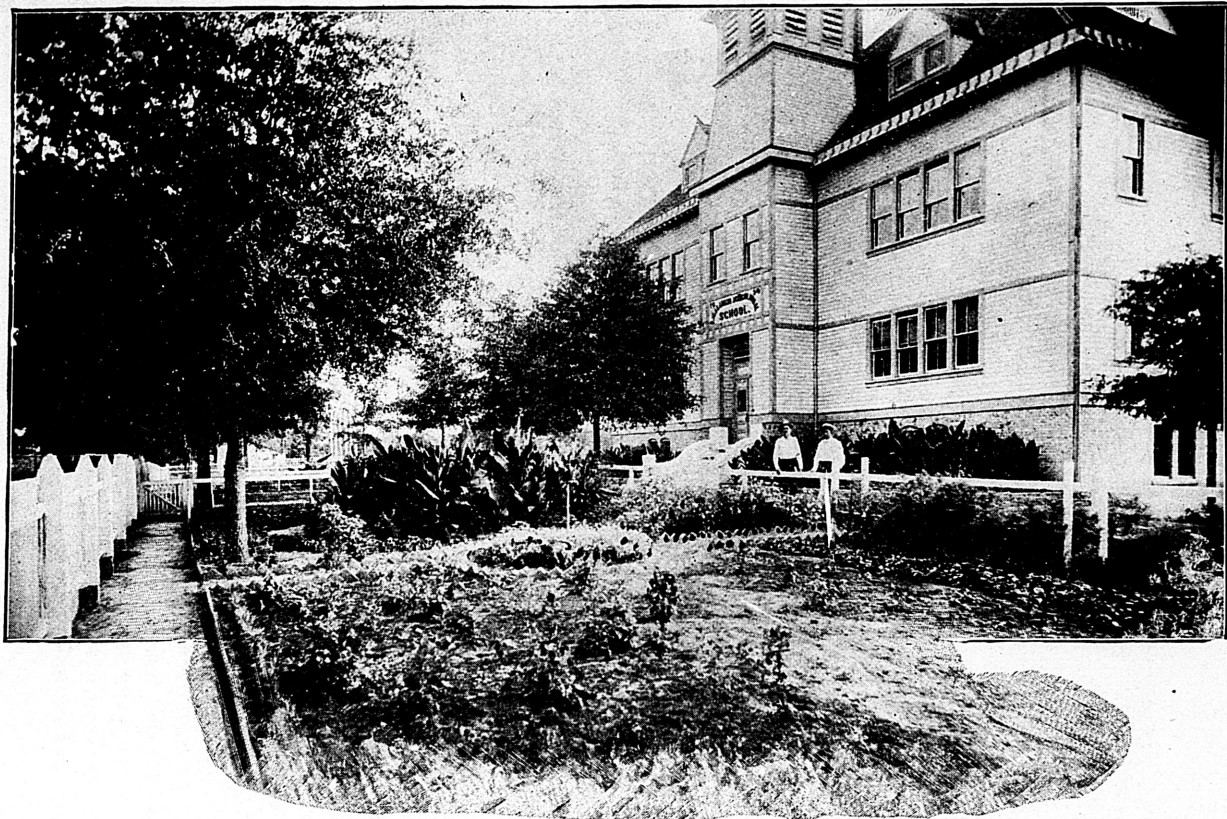
The Southwest Alabama Agricultural School is a Scientific and Classical Institution, established by an act of the Legislature of 1892-93, operated by a Board of Control, composed of the Governor, the Superintendent of Education, the Commissioner of Agriculture, and two local trustees, and managed by a competent Faculty of college men and women.

The aim of the State was primarily to found and maintain a school for Southwest Alabama, where young men who expect to become farmers may be taught the principles of scientific agriculture—both theoretical and practical—where tests of soils and of fertilizers may be made, and where experiments may be conducted in the growth of grains, fruits, vegetables, vines, grasses, and in dairying and stock raising. The experiments are conducted by pupils regularly as a part of the curriculum, on a well selected farm of thirty-five acres of ground, one-half mile from the school buildings.

The farm is owned by the State and operated by the Board of Control under the skillful direction of a practical agriculturist.

The school, while called agricultural, is not so entirely, as all the other sciences, together with the classics, music, art, and a normal, or training department for teachers, are included in its curriculum, and its doors are open to pupils of both sexes and all grades.

The Faculty will strive to stimulate and encourage a laudable ambition in the minds and hearts of their pupils; to direct their efforts in the routine of school work, so as to lead them to appreciate and practice self-reliance; to instill into their minds a proper conception of human life; to give a correct idea of American citizenship; to fit them for useful and honorable pursuits in after years.



VIEW OF FRONT YARD, SHOWING FLOWER GARDENS.

LOCATION.

Evergreen is an interesting town in Conecuh County, Alabama, and has long enjoyed an enviable reputation for healthfulness, and its refined and cultivated society. Being situated on the highlands of Southwest Alabama, with a perfect system of natural drainage, it is, consequently, free from malarial troubles and the depressing influences of places not so highly favored by nature. This, connected with the fact of its invigorating air and pure, cold water, is a material element in school work.

Situated directly on the line of the Louisville & Nashville Railroad, nearly midway between Montgomery and Mobile, Evergreen is easy of access from all points.

The last official census gave the district of Evergreen a population of 2,458, which is steadily being increased with a very desirable class of intelligent and thrifty people from all sections of the country, and especially from the blizzard-stricken States of the North.

Indeed, our town has become famous as a winter resort, and not only our hotels, but many of our private homes are filled every winter with a wealthy and intelligent class of people who find Evergreen a veritable "City of Refuge" from the chilling blasts of the North. Evergreen possesses a health record unsurpassed by any other locality in the United States.

Evergreen is absolutely free from saloons and the numerous other snares which have ruined thousands of young men in the formative period of character. On the contrary, it affords superior facilities in refined social intercourses, Sunday school and church privileges, and everything that will aid the management of the school in building up strong and vigorous characters.

BUILDINGS AND GROUNDS.

A new and elegant modern school building, situated on a beautiful plat, containing fifteen acres of well shaded land, affording delightful play grounds for pupils, has been erected at a cost of \$12,000. The building is a large two-story structure, with a basement and auditorium containing sufficient seating capacity to accommodate comfortably five hundred people.

The two upper stories are divided into eight large recitation rooms, each furnishing ample space for fifty pupils. Between

these rooms, above and below, running the entire length of the building, are spacious halls twelve feet wide, making each room separate and distinct from the rest, thus affording ample space for the moving of classes, and a free and perfect ventilation. Every room is furnished with new patent desks, recitation seats, teachers' desks, and all other necessary furniture.

The architecture of the building has special reference to the proper emission and diffusion of light, and every room so arranged that proper heat and ventilation can be secured at will.

A handsome fence encloses the grounds, and the Board of Control have spared neither pains nor money in providing such improvements as will make the school ground in keeping with the elegance of the building.

INSTRUCTORS.

In selecting the Faculty, the Board of Control have exercised the utmost precaution. They well know that while beautiful and commodious school buildings and other surroundings enter into school work as important factors, no institution of learning can be successfully operated without a carefully selected corps of instructors. With this idea in view, they feel that they are to be congratulated on securing the services of those who have had varied experience as educators. Our teachers have been selected to fill positions in the school for which each has a special fitness, consequently, the best results may be confidently expected.

GOVERNMENT.

The government of the school is in accord with that of a well regulated family.

Students are treated with such courtesy, and have extended to them such kindly considerations as they have a right to expect. At the same time, all students are held responsible for good deportment and diligent use of their time.

Any one who persists in non-conformity to the regulations of the school will be dismissed.

DISCIPLINE.

The discipline is *mild*, but *firm*. Order being absolutely necessary, any regulations the Faculty find necessary are enforced.

METHODS.

The Faculty are wide awake and thoroughly abreast of the great educational progress of the day, and keep themselves well informed, through school journals and other educational literature, of the latest and most approved methods of school work as used by the best educators of the world. These methods are adopted as far as they are found practicable, and while the teachers do not run off after every new-fangled method or theory advanced, they are always on the alert for improvements. The end in view is to secure thoroughness with rapidity, and we ask our patrons to look to results and leave the methods with the Faculty.

EXAMINATIONS AND PROMOTIONS.

All pupils on entering are examined by the President, and assigned to the respective grades and classes for which they are found prepared. During the last week of each scholastic quarter of nine weeks, reviews in all the departments are conducted, and at the end of each session carefully written examinations are given, and all pupils making an average of 75 per cent. are promoted to the next higher grade or class.

Promotions depend strictly upon these examinations, and no exceptions are made or favors shown for loss of time on the part of any pupil.

REPORTS.

At the end of each quarter a report of each pupil's standing, department and progress, is made out and sent to patrons. These reports show what the pupil is doing, as a record of each pupil's class standing is made after each recitation.

Parents are requested to examine these reports carefully, and to cooperate with the Faculty in securing the best possible conduct and study on the part of pupils.

CLASS ROOM AUXILIARIES.

It is the intention of the Board of Control to supply the school during the coming session with such class room aids as are found necessary to illustrate and supplement text-books. We are already supplied with many useful aids and chemical supplies.

NORMAL TRAINING CLASS.

A normal or training department is offered for the benefit of young men and women who intend to become teachers and desire such a course.

Work in this class will embrace a study of the history of education, history of educational reformers, school organization and management, and the latest and best methods of instruction and school government.

The attention of teachers who wish to prepare themselves for a higher grade of work is especially called to this department, and they are invited to correspond with the President.

SCHOOL OF MUSIC.

Miss McLemore, Principal.

Few schools enjoy better facilities for instrumental music. Miss McLemore, who will have charge of this course, is peculiarly talented in instrumental music, and has enjoyed superior advantages of instruction. She has added to this several years of practical experience as a teacher, and is maturely competent to instruct all who may put themselves under her instruction.

Tuition in this department is as follows:

| | |
|--|--------|
| Lessons on Piano, per month..... | \$3 00 |
| Lessons on organ, per month..... | 3 00 |
| Lessons on mandolin and guitar, per month..... | 3 00 |
| Lessons on violin, per month..... | 4 00 |

The study of music tends to elevate the mind into harmony with nature and unison with God.

In this department, special attention is given not only to technical skill, but to the intellectual comprehension of its harmonic structure.

Each pupil receives careful instruction, receiving lessons every other day, while her practice is carefully guarded by the teacher herself.

RECITALS.

During the session the pupils are required to give recitals.

Good classical compositions are rendered to the best of the ability of the students. These entertainments elevate the tone of the school, and are quite necessary in order to create aspirations and ambition in others.

CHORUS CLASSES.

Free to all pupils who desire to take advantage of this class. Lessons are given in sight reading and chorus singing.

ROLL OF MUSIC PUPILS.

| | |
|------------------------|---------------------|
| Dora Amos. | Marcella McCreary. |
| Jessie Archer. | Ethel Mason. |
| Lucille Brooks. | Ruby Cecil Nelson. |
| Bessie Braintley. | Myrtle Rabb. |
| Bessie Binion. | Ruby Rabb. |
| Elise Beavan. | Naomi Rabb. |
| Cora Betts. | Fannie Reynolds. |
| Minnie Crumpton. | Kate Reynolds. |
| Myrtle Crumpton. | Wilsie Robson. |
| Annie Laurie Crawford. | Mrs. J. W. Stewart. |
| Jettie Belle Crawford. | Mamie Steele. |
| Helen Cunningham. | Virginia Savage. |
| Mrs. Will Cunningham. | Mary Salter. |
| Mrs. Kate Riley Clark. | Ethel Thomason. |
| Alpha Goodson. | Florine Thomason. |
| Nellie Hopkins. | Edna Thomas. |
| Minnie Hawkins. | Etta Varnadoe. |
| Annie Mae Holloway. | Fronie Walston. |
| Minn'e Jones. | Bennie Walston. |
| Lucy Jones. | Emma Whittle. |
| Annie Rea Kennedy. | Essie Whittle. |
| Ethel Lazenby. | Clara Mae Waller. |
| Mattie Lowrey. | Janette Walker. |
| Maude Lowrey. | Pearl Williamson. |
| Dorothy McCreary. | Verna Williamson. |
| Mary McCreary. | Lois Williamson. |
| Olive McCreary. | Bessie Yates. |

CALISTHENICS AND DELSARTE.

In addition to the regular classes in Physical Culture, there are daily exercises in Calisthenics in a splendidly lighted and ventilated hall. These exercises are modified and improved by the introduction of the Delsarte system. The distinguishing characteristic of the Delsarte method is its harmonious development of the whole being. No exercise is practiced simply for

a physical result, but for the purpose of developing the body, and, through it, exhibiting the mind and spirit, all harmonized in their reciprocal influence and efforts. The Delsarte system of gymnastics corrects awkwardness, imparts grace of movement, emotional and æsthetic value. Special attention is given to this phase of culture.

NEATNESS AND DRESS.

Constant effort is made to secure neatness and order on the part of the young ladies and the young gentlemen in the arrangement and care of their clothing and person.

While no uniform is prescribed during the session, we shall insist on such plainness and simplicity in dress as comports with sound economy and good taste.

We believe our effort in this direction will be fully appreciated by those who are making sacrifices to keep their sons and daughters in school.

CULTIVATION OF MANNERS.

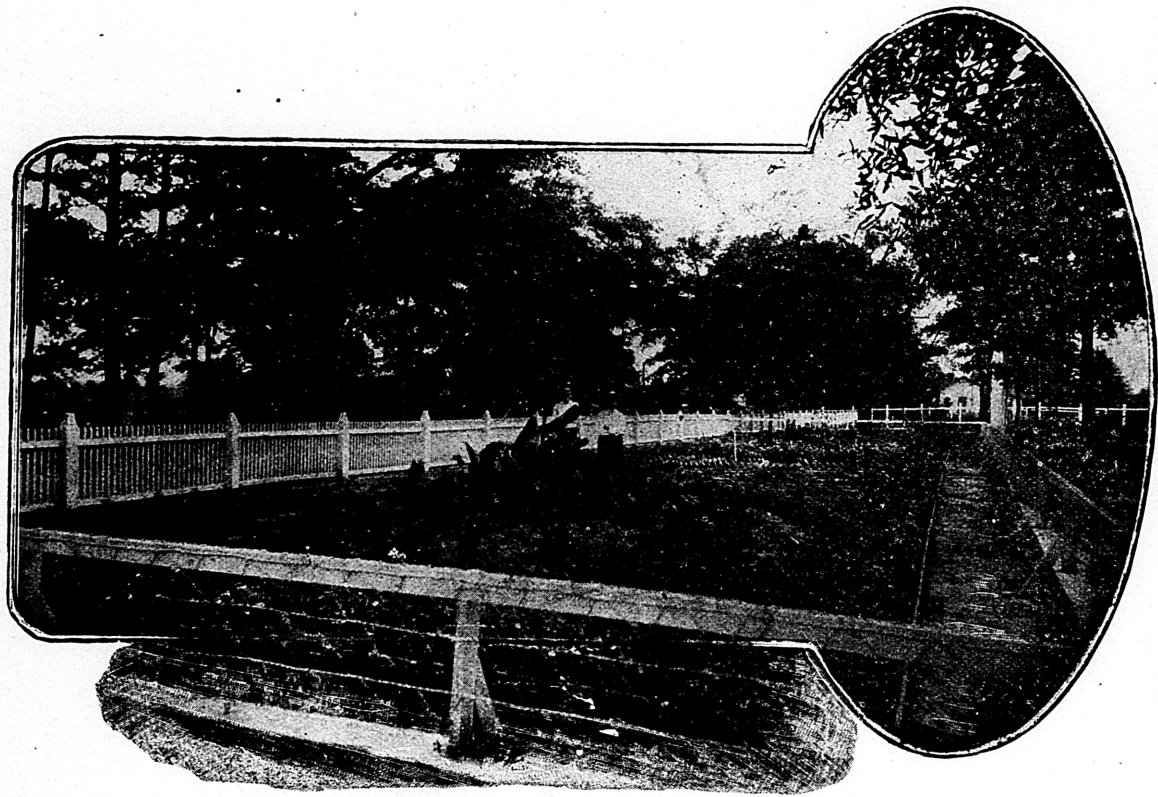
One of the great objects in education is the right cultivation of taste, sentiment and manners of our boys and girls. In the sphere of cultivated taste, in pure sentiments; and refined manners are found the greatest influence and the sweetest charms of women, and ennobling qualities of manhood. We shall use all diligence to teach our pupils those pure and lofty rules of Christian duty and social ethics which most elevate, dignify and adorn character. It shall be the constant aim of all who are engaged in the work of the school to inspire and cultivate the art of that refined conversation and those polished manners which are indispensable qualifications for the social circle.

LECTURES.

For the benefit of the school and public generally, a course of lectures on religious, scientific, literary, and other subjects, will be given from time to time during the next session by lecturers of established reputation.

ROLL OF HONOR.

Every pupil who attains, during the session, a grade of 95 per cent. in scholarship and 100 per cent. in deportment and at-



FLOWER GARDEN, LOOKING NORTH FROM MAIN ENTRANCE.

tendance, shall have his or her name placed on the Honor Roll, and the fact published in the local papers, and also publicly announced on Commencement Day.

The following is a list of pupils who made the required average in all studies pursued during the past session, and who are entitled to have their names appear on our yearly Honor Roll:

HONOR ROLL.

| | |
|--------------------------|--------------------------|
| Julia Salter (4.) | Ruby Nelson (2.) |
| Florine Thomason (3.) | David Bailey (3.) |
| Sallie Lee McCreary (4.) | Leslie Sawyer (1.) |
| Augusta Farnham (2.) | Essie Whittle (1.) |
| Aline Farnham (2.) | Valeria Johnson (3.) |
| Pansy Chapman (1.) | Ethel Jones (4.) |
| Douglas Salter (3.) | Stella Gantt (1.) |
| Mary Ella Bailey (4.) | Virginia Savage (1.) |
| Roberta McCreary (4.) | Fronie Walston (1.) |
| Mamie Farnham (2.) | Pearl Williamson (3.) |
| Mina Guerry (1.) | Lois Mixon (1.) |
| Irene Giddens (2.) | Addie Mancil (3.) |
| Ida Murphy (4.) | Mary Cunningham (1.) |
| Marcella McCreary (4.) | Mattie Lou Dunsford (1.) |
| Mary Stallworth (2.) | Ethel Bettis (1.) |
| Myrtle Crumpton (4.) | Kathleen Lundy (1.) |
| Mary Dent Salter (3.) | Robert Page (1.) |
| Maude Goodson (4.) | Helen Cunningham (1.) |
| Cora Beatty (2.) | Lula Giddens, (1.) |
| Lewie Finch (2.) | Bruce Thompson (1.) |
| Janie Guerry (2.) | Morton Jones (1.) |
| Pauline Giddens (2.) | John Salter (2.) |
| Ruby McCreary (1.) | |

*The number in parenthesis indicate the number of quarters each pupil has been on the Honor Roll.

THESIS.

Each applicant for a diploma is required to write and submit to the Faculty an essay or oration and read or deliver the same at Commencement, if required by the Faculty. It must be given to the Principal by the first of May.

• LIBRARY.

This valuable adjunct of our school is no longer a mere plan, but a reality. The Faculty has been able, through appropriations from the Board of Control, and generous donations from patrons of the school, to collect over 350 choice volumes, including a valuable set of Encyclopedias, English, Latin and French Dictionaries, and many standard works of biography, history, travel, and fiction.

A neat, cozy room on the second floor of the school building, easily heated and well lighted, has been set apart for the Library. At present, however, the books are kept for convenience in a recitation room down stairs, where, under the advice and guidance of a teacher, pupils may select those books best suited to their degree of advancement. Pupils so desiring may, upon application to any member of the Faculty, have a definite course of reading outlined for them, and for all pupils studying English literature a prescribed course is required.

An Assistant Librarian is appointed from among the more advanced pupils, and under his supervision the Library is kept open throughout the entire day. In this way the works of reference are always accessible, and upon application any pupil may withdraw a book for a period not exceeding two weeks.

There are no Library fees. The privileges of withdrawing books is granted to every pupil, charges being made only in case of damage or loss of books.

Gifts to the Library are solicited, and always received cheerfully.

LITERARY SOCIETIES.

There are five literary societies organized in the school, one for the young men, one for the young ladies, two for boys and girls between the ages of twelve and fifteen, and one for little boys and girls under twelve, which meet each Friday afternoon in their respective society halls for the social, intellectual and moral advancement of their members. While these societies have the supervision of the Faculty, they are presided over by officers selected from and by their own membership. There is no more potent influence in school life for stimulating and developing the mind to ready and correct thought, and the pen and tongue to concise expression, than well regulated, systematic society work. The great men of to-day, in the pulpit,

at the bar, and in the arena of politics, largely owe their success in swaying the multitudes of anxious listeners to their training in the literary societies while at school. The Faculty will be mindful of the advantages of these societies, and will assist the pupils in perfecting their organizations and work. All pupils in the school, except those in the Primary Department, will be required to become identified with one or the other of these societies, and to give earnest attention to all their requirements and privileges.

JEFFERSON DAVIS SOCIETY.

The Jefferson Davis Society, organized among the young men, is mainly a debating society, and all members are required to take part in debates, declamations, discussions, etc. Each member is given an opportunity to serve in the different offices, subject to the action of the members. Each member is required to declaim five times during the entire session from the rostrum in the chapel before the whole school.

ATHENEAN SOCIETY.

The Athenean Society, organized among the young ladies, is purely for literary purposes. The members are required to write essays, read selections, recite, etc., under the direction of a member of the Faculty. The program is changed from time to time to sustain interest in the work. Different American and English authors will be discussed during the year, and excellent opportunities will be afforded for the formation of knowledge and general culture.

JEFFERSON DAVIS JUNIOR SOCIETY.

The Jefferson Davis Junior Society is organized among the boys between the ages of twelve and fifteen, who, through immaturity of mind or lack of educational advantages, or both, are not prepared to participate in the exercises of the higher society. They are regularly organized, with all the officers found in the higher society, and selected from their own membership. Special instructions are given them as to the duties of each officer, the rules and principles of parliamentary usage, and are carefully trained in the discussions of simple and easy subjects, and everything calculated to best fit them for entrance into the higher society.

GOLDEN ROD SOCIETY.

The Golden Rod Society is composed of girls between the ages of twelve and fifteen. They are regularly organized with all the usual officers, chosen from among their own members, and are carefully trained in all the details necessary to the conduct of their society. Their exercises consist of music, recitations, light readings, and such other features from time to time as will best fit them for entrance into the Athenian Society.

LITERARY GLEANERS.

This is a society composed of little boys and girls between the ages of ten and twelve years. They are organized in regular order, with all the officers usually found in literary societies, and are carefully trained in all the duties pertaining to each officer. The exercises given them consists mainly of declamations, recitations, readings, the correct position to assume when appearing in public, and such other instructions as will prepare them for more advanced work.

CO-EDUCATION.

The Southwest Alabama Agricultural School is opened to both sexes, and furnishes the same course of study to boys and girls.

The Board of Control are firmly fixed in the opinion that it is far better that boys and girls should be educated in the same school. While it has a refining influence upon the boy, the girl is made stronger by the mental combat with the opposite sex. The great educational success achieved by the large number of co-educational schools and colleges all over the land—institutions from which strong and well trained minds emanate year after year—is positive proof that the principle here advocated is not a fancy. The training of boys and girls together, and under the same roof, has long since passed the experimental stage.

CHURCH PRIVILEGES.

Leading Christian denominations are well represented in Evergreen, with neat and attractive places of worship, an intelligent ministry, and refined congregations. Flourishing Sunday schools are also maintained. Boarding pupils are required

to attend Sunday school regularly, and religious services at least once on Sunday. As the school is strictly non-sectarian, pupils may attend the church and Sunday school of their choice.

TUITION AND FEES.

Tuition is *absolutely free*.

The State appropriation, however, is not sufficient to defray all the expenses, and the Board of Control have found it necessary to charge a small *matriculation fee* to meet the deficit.

The matriculation fee, *which is paid on entering*, is \$3.00 per scholar per term of four and one half months, in the Primary and Préparatory Departments; and \$5.00 in the High School and Collegiate Departments.

BOARDING.

Good board in private families can be secured at \$8.00 to \$10.00 per month, including fuel and lights. Families residing in the country adjacent to Evergreen, who have children to educate, can, by clubbing together, and furnishing their own provisions and renting a house in town, reduce the expenses to probably one half the above estimate.

DAMAGES.

Each pupil is held responsible for all repairs of damages he may do to the property. General damages will be paid by the Board of Control.

REMARKS.

It is very necessary that all pupils who expect to enter should be present on the opening day and remain to the end if possible. The absence of even a few days causes pupils to fall behind their classes, and, as a natural consequence, they nearly always become discouraged and suffer inestimable loss. This is generally the fault of the parent. We urge them to an appreciation of the importance of regular attendance.

DIPLOMAS.

Pupils completing the full Literary, Scientific, and Classical course of study prescribed in our curriculum are granted diplomas with the title of full graduates.

COURSE OF STUDY.

PRIMARY DEPARTMENT.

First Grade.

Reading—Baldwin's First; Reading from chart and blackboard, and supplementary reading.

Writing—In script with pencil and on the blackboard from the Reading Lessons.

Drawing—From blackboard and cards.

Spelling—Words in Reading Lessons.

Numbers—1 to 20; Addition, Subtraction, Multiplication, Division, and Fractions.

Oral Instruction in Language, and on familiar objects.

Singing and physical exercises.

Second Grade.

Reading—Baldwin's Second; supplementary reading.

Writing—As in First Grade.

Drawing—Augsburg's No. 1.

Spelling—From Reading Lessons—Branson's No. 1.

Primary Arithmetic.

Oral instruction in Language, etc., continued.

Singing and physical exercises.

INTERMEDIATE DEPARTMENT.

Third Grade.

Reading—Baldwin's Third; supplementary reading.

Writing—With pencil and on blackboard, and New Era Copy Book No. 1.

Drawing—Augsburg's No. 2.

Spelling—From Reading Lessons; Branson's No. 1 completed.

Arithmetic—Work of Second Grade continued.

Oral and written instruction of Second Grade continued.

Singing and physical exercises.

Fourth Grade.

Reading—Baldwin's Fourth; supplementary reading.

Writing—With pen, using New Era Copy Book No. 3.

Drawing—Augsburg's No. 3.

Spelling—From Reading Lessons; Branson's No. 2 to Rules for Spelling.

Arithmetic—Milne's Elements to Fractions.

Geography—Maury's Elementary begun, to South America.

Language—Continued, using Beuhler's Elementary.

Singing and physical exercises.

HIGH SCHOOL DEPARTMENT.

Fifth Grade.

Baldwin's Fifth; supplementary reading.

Writing—New Era Copy Book, No. 3.

Drawing—Augsburg's No. 3.

Spelling—Branson's No. 2, continued.

Arithmetic—Milne's Elements completed.

Geography—Maury's Elementary completed.

English—Beuhler's Elementary completed.

Physiology—Overton's Intermediate.

Singing and physical exercises.

Sixth Grade.

Writing—New Era Copy Book No. 4.

Spelling—Branson's No. 2, completed.

Arithmetic—Cook and Cropsey, to Percentage.

Geography—Maury's Manual, to South America.

English—Beuhler's Higher Lessons, begun.

Reading—Baldwin's Sixth.

History—Hansell's New School History of United States.

COLLEGIATE DEPARTMENT.

Freshman.

Agriculture for Beginners, by Burkett, Stevens and Hill. (18 weeks.) Take nine excursions with class to farm or exercises in farm work.

Principles of Agriculture, by Winslow. (9 to 18 weeks.)

Arithmetic—Cook and Cropsey; also Wentworth's Mental Arithmetic.

Grammar—Beuhler, review and complete.

Algebra—Milne's Elementary.

Geography—Maury's Manual, completed.

U. S. History—Hansell's Higher.
 Spelling—Reed's Word Lessons.
 Penmanship—New Era System.
 Latin—C. & D., First Year, through declensions.

Sophomore.

Soils and Crops—Morrow and Hunt. (4 Bulletins and 18 farm exercises, or botanical excursions.) This book should be thoroughly reviewed.

Botany—Bergen.

Algebra—Milne's High School.

Rhetoric—Lockwood and Emerson. (Supplementary work, English and American Classics.)

Alabama History—Brown.

Civil Government—Peterman.

Spelling—Reed's Word Lessons.

Latin—Collar and Daniel's First Year completed.

Physiology—Overton's.

Junior.

Principles of Horticulture—Goff (18 weeks.)

Stock Lectures. (Abstracting from Curtis or Shaw, and 3 bulletins on same subject.)

Chemistry—Remsen's Briefer Course. (27 weeks.)

Algebra—Milne's High School.

Geometry—Wentworth's Plane.

Physical Geography—Davis.

Physics—Gage.

English History—Coman and Kendall.

Rhetoric—Lockwood and Emerson. (Supplementary work, English and American Classics.)

Latin—Gradatim; and two books in Cæsar.

Senior.

Snyder's Chemistry of Soils and Fertilizers. (18 weeks.)

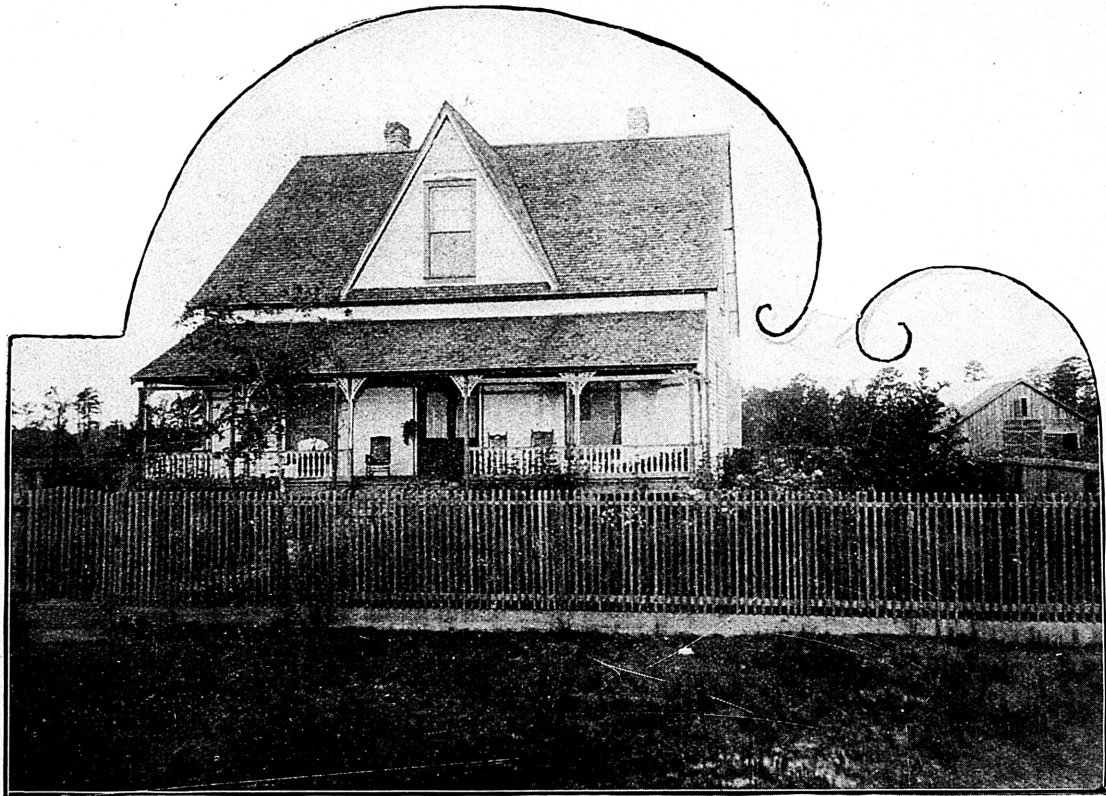
Advanced Botany (to be selected.)

Geometry—Wentworth's Solid.

Trigonometry—Wentworth's Plane.

General History—Myer.

English Literature—Painter. (Supplementary work, English Classics.)



EXPERIMENT STATION RESIDENCE.

Arithmetic—(Review.) Use a higher arithmetic for text-book.

Latin—Complete Cæsar; Virgil.

Theory and Practice—Page.

School Laws of Alabama.

Those who expect to enter school can consult the above, and bring with them any of the books mentioned they may already possess. Parents are advised not to buy any text-books until their children have been examined and properly classified by the Principal.

EXPERIMENT STATION.

The Experiment Farm in connection with the school, consists of thirty-five acres of land situated about one-half mile from the school, upon which practical experiments in agriculture and horticulture are conducted. During the spring, classes of boys are taken from time to time and given practical lessons in the preparation of the soil, in mixing and using the different kinds of fertilizers, proper distances, depth and time for planting various grains, fruits, and grasses grown on the farm.

The object of the practical work on the Station is to make clear and fix in the minds of the students the principles of agriculture and horticulture taught in the class room. In giving instructions in agriculture, no iron-clad rules are laid down and followed, but the students are encouraged to independent thought, and to familiarize themselves with useful facts and general principles that can be adapted to varying conditions and circumstances.

Theoretical instruction in agriculture is given in the class room by means of text-books in the hands of pupils, by lectures from the teacher, and by examinations of the bulletins of the various Agricultural Stations throughout the United States, which are regularly received by the school. Among the subjects dealt with in the lectures are the proper use of commercial fertilizers, the deep and thorough preparation of the soil before planting, how to make pea vine hay; the care of fruit trees at the nursery, and the primary advantage of ordering them direct; the selection of varieties of fruits best adapted to our climate, etc. In teaching from the text-book, particular attention is called to those facts which are the most useful and of the most practical importance.

A good dwelling house has been erected on the Experiment Farm, and will, during the coming year, be occupied by a member of the Faculty. He will be prepared to take a limited number of boarders, and to help pay the expenses of these pupils an opportunity will be given to them to do some work, for which they will receive pay.

Those desiring to avail themselves of the chance here offered should engage board at once, or it will not be possible to accommodate them.

As soon as any series of experiments is finished, bulletins will be issued, setting forth in detail the results, which may be had by any one interested, on request to the Principal, free of charge. We trust that farmers, truck and fruit growers will avail themselves of the information that will be thus furnished.

GRADUATES.

1895.

Miss Willie Hagood.
Miss Mattie Lee.

Miss Mamie McCreary.
Mr. William B. Ivey.

1896.

Miss Elvie Liverman.
Miss Mary Liverman.
Miss Sallie Stallworth.
Mr. Arthur Cunningham.
Mr. Willie Wilton Watts

Miss Mary Howard Watkins.
Miss Hallie Watkins.
Miss Fannie K. Dennis.
Miss Mary R. Sampey.

1898.

Miss Cora C. Goodwin.
Mr. John B. Chapman.

Miss Mary Ella Kendall.
Mr. Willie A. McCreary.

1899.

Miss Sue Stallworth.
Miss Ronda Russell.
Miss Ethel Ervin.

Miss Essie Hollowell.
Mr. Walter L. Nicholls.

1900.

Miss Irene Chapman.
Miss Nina Mae Binion.
Miss Bodie L. Hagood.
Miss Emma C. Moorer.

Mr. John R. Searcy.
Mr. Charles J. Crawford.
Mr. M. T. Stallworth.
Mr. George O. Bruner.

1901.

Mr. Sam Long.
Miss Lena Long.
Miss Ethel Bennet..

Mr. Wilber Salter.
Miss Mary Henderson.

1902.

Mr. Robert B. Hagood.
Mr. James L. Murphy.

Miss Alma B. Shields.
Miss Julia S. Wilson.

1903.

Miss Nannie Stamps.
Miss Mary B. Burnett.
Miss Carlotta McCreary.
Miss Ernestine McCreary.
Miss Lizzie M. Bruner.

Miss Maranda Etheridge.
Miss Virginia Etheridge.
Miss Kate E. Kendall.
Mr. Hugh S. Hagood.
Mr. William H. Crawford.

1904.

Miss Jettie B. Crawford.
Miss Lucile Frazer.

Miss Myna Shields.

1905.

Miss Ethel Kendall.
Miss Julia Salter.
Miss Douglas Salter.

Miss Florine Thomason.
Miss Pearl Williamson.

ROLL OF PUPILS.

| | |
|-------------------|-----------------------------------|
| Andrews, Lucile | Evergreen, Ala. |
| Amos, Joe | Evergreen, Ala. |
| Amos, Dora | Evergreen, Ala. |
| Archer, Jessie | Evergreen, Ala. |
| Andrews, DeWitt | Evergreen, Ala. |
| Amos, Addie | Evergreen, Ala. |
| | |
| Booker, Georgia | (Monroe Co.), McNeil, Ala. |
| Bettis, Ethel | Evergreen, Ala. |
| Binion, Edna | Evergreen, Ala. |
| Barnes, Mabel | Evergreen, Ala. |
| Burnett, Erle | Evergreen, Ala. |
| Binion, Bessie | Evergreen, Ala. |
| Binon, May Bird | Evergreen, Ala. |
| Binon, Mack | Evergreen, Ala. |
| Binon, Eugene | Evergreen, Ala. |
| Brantley, Bessie | (Monroe Co.) Burnt Corn, Ala. |
| Brantley, Claude | (Monroe Co.) Burnt Corn, Ala. |
| Binon, Elizabeth | Evergreen, Ala. |
| Barlow, Emmett | Evergreen, Ala. |
| Bailey, Dan | Evergreen, Ala. |
| Bailey, Mary Ella | Evergreen, Ala. |
| Bailey, David | Evergreen, Ala. |
| Betts, Cora | Betts, Ala. |
| Bettis, John | Evergreen, Ala. |
| Barnes, Donnie | Evergreen, Ala. |
| Brown, Aubrey | Evergreen, Ala. |
| Burnett, Stewart | Evergreen, Ala. |
| Braxton, James | Evergreen, Ala. |
| Braxton, Ira | Evergreen, Ala. |
| Burnett, Minnie | Evergreen, Ala. |
| Beavens, Elise | Evergreen, Ala. |
| Brooks, Lucile | Evergreen, Ala. |
| Beatty, Cora | Evergreen, Ala. |
| Barrow, Ruby | (Covington Co.) River Falls, Ala. |
| Barrow, Grace | (Monroe Co.) Activity, Ala. |
| Boutwell, Hattie | Evergreen, Ala. |
| Boutwell, Ollie | Evergreen, Ala. |



BIRDSEYE VIEW OF ENTIRE EXPERIMENT STATION, LOOKING NORTH.

| | |
|---------------------|----------------------------------|
| Bates, Charlie | Evergreen, Ala. |
| Boutwell, Lonnie | (Lowndes Co.) Braggs, Ala. |
| Chapman, Octavia | Evergreen, Ala. |
| Chapman, Pansy | Evergreen, Ala. |
| Crawford, Vernie | Evergreen, Ala. |
| Crumpton, Myrtle | Evergreen, Ala. |
| Crumpton, Minnie | Evergreen, Ala. |
| Crumpton, Bernard | Evergreen, Ala. |
| Croom, Robert | Evergreen, Ala. |
| Cook, Lena | Evergreen, Ala. |
| Clark, Morris | Evergreen, Ala. |
| Crawford, Charles | Evergreen, Ala. |
| Chapman, Genie | Evergreen, Ala. |
| Casey, Belle | (Butler Co.) Starlington, Ala. |
| Cunningham, Helen | Evergreen, Ala. |
| Cunningham, Herndon | Evergreen, Ala. |
| Cunningham, Gilbert | Evergreen, Ala. |
| Carr, Marvin | (Covington Co.) Rose Hill, Ala. |
| Carter, Wynona | (Monroe Co.) Activity, Ala. |
| Chapman, Willie | (Monroe Co.) Simpkinsville, Ala. |
| Cunningham, Mary | Evergreen, Ala. |
| Dunsford, Mattie | Evergreen, Ala. |
| Doyle, Walter | Evergreen, Ala. |
| Deming, Claiborn | Evergreen, Ala. |
| Deming, John | Evergreen, Ala. |
| Darby, Gay | Evergreen, Ala. |
| Darby, Willis | Evergreen, Ala. |
| Driggers, Pearl | (Covington Co.) Rose Hill, Ala. |
| Dillard, Clarence | (Covington Co.) Rose Hill, Ala. |
| Douglass, Alonzo | Evergreen, Ala. |
| Ervin, Albert | Evergreen, Ala. |
| Farnham, Aline | Evergreen, Ala. |
| Farnham, Augusta | Evergreen, Ala. |
| Farnham, Mamie | Evergreen, Ala. |
| Fenn, Maude | Evergreen, Ala. |
| Finch, Lewie | Evergreen, Ala. |
| Foxworth, Robert | (Lowndes Co.) Forest Home, Ala. |
| Fenn, Matthew | Evergreen, Ala. |

| | |
|---------------------|-----------------|
| Fenn, Warren | Evergreen, Ala. |
| Frazier, Lula May | Evergreen, Ala. |
| Goodson, Alpha | Evergreen, Ala. |
| Goodson, Grady | Evergreen, Ala. |
| Goodson, Annie | Evergreen, Ala. |
| Giddens, Irene | Evergreen, Ala. |
| Giddens, Pauline | Evergreen, Ala. |
| Giddens, Lula | Evergreen, Ala. |
| Grice, Isla | Evergreen, Ala. |
| Grice, Julius | Evergreen, Ala. |
| Guice, Massey | Evergreen, Ala. |
| Guice, Rivers | Evergreen, Ala. |
| Guice, William | Evergreen, Ala. |
| Guice, J. G. | Evergreen, Ala. |
| Guice, Ira | Evergreen, Ala. |
| Guice, Lydia | Evergreen, Ala. |
| Gantt, Claude | Evergreen, Ala. |
| Gantt, Stella | Evergreen, Ala. |
| Guerry, Mina | Evergreen, Ala. |
| Guerry, LeGrande | Evergreen, Ala. |
| Guerry, A. Grande | Evergreen, Ala. |
| Goodson, Maude | Evergreen, Ala. |
| Goff, John | Evergreen, Ala. |
| Holloway, Annie May | Bellevue, Ala. |
| Hopkins, Nellie | Evergreen, Ala. |
| Henderson, Lizzie | Evergreen, Ala. |
| Henderson, T. | Evergreen, Ala. |
| Hagood, Travis | Evergreen, Ala. |
| Hagood, Edwin | Evergreen, Ala. |
| Hawkins, Minnie | Evergreen, Ala. |
| Hawkins, Sim | Evergreen, Ala. |
| Harper, Orren | Herbert, Ala. |
| Henderson, Edward | Evergreen, Ala. |
| Hagood, Claude | Evergreen, Ala. |
| Henderson, John | Evergreen, Ala. |
| Henderson, Joel | Evergreen, Ala. |
| Hightower, Guy | Diadem, Ala. |
| Hightower, Carrie | Diadem, Ala. |
| Hightower, Arza | Diadem, Ala. |

| | | |
|--------------------|-------|----------------------------------|
| Ingraham, Angie | ----- | Castleberry, Ala. |
| Jones, Minnie | ----- | Evergreen, Ala. |
| Jones, Lucy | ----- | Evergreen, Ala. |
| Jones, Ethel | ----- | Evergreen, Ala. |
| Jones, Mary | ----- | Evergreen, Ala. |
| Jones, Robert | ----- | Evergreen, Ala. |
| Jones, Clifford | ----- | Evergreen, Ala. |
| Jones, Zelle | ----- | Evergreen, Ala. |
| Jones, Pearl | ----- | Cohasset, Ala. |
| Johnson, Valeria | ----- | Evergreen, Ala. |
| Johnson, Ezra | ----- | Evergreen, Ala. |
| Jay, Carol | ----- | Evergreen, Ala. |
| Jay, Wilson | ----- | Evergreen, Ala. |
| Johnes, Grace | ----- | Evergreen, Ala. |
| Johnes, Lillie | ----- | Evergreen, Ala. |
| Joyner, Eli | ----- | Manti, Ala. |
| Jones, Morton | ----- | Evergreen, Ala. |
| James, Edwin | ----- | Evergreen, Ala. |
| James, Corrie | ----- | Evergreen, Ala. |
| Johnes, Joe | ----- | Evergreen, Ala. |
| Jackson, Bonifay | ----- | (Escambia Co.,) Herrington, Ala. |
| Kendall, Ethel | ----- | Evergreen, Ala. |
| Kendall, Ruby | ----- | Evergreen, Ala. |
| Kitchens, Thomas | ----- | Evergreen, Ala. |
| Kitchens, Lillie | ----- | Evergreen, Ala. |
| Kitchens, Martin | ----- | Evergreen, Ala. |
| Kitchens, John | ----- | Evergreen, Ala. |
| Kendall, Katie | ----- | Evergreen, Ala. |
| Kendall, Robert | ----- | Evergreen Ala. |
| Kendall, Albin | ----- | Evergreen, Ala. |
| Kendrick, Charlie | ----- | Evergreen, Ala. |
| Kendrick, Lee | ----- | Evergreen, Ala. |
| Kendrick, May | ----- | Evergreen, Ala. |
| Lazenby, George | ----- | Evergreen, Ala. |
| Lazenby, Ernestine | ----- | Evergreen, Ala. |
| Lazenby, Bessie | ----- | Evergreen, Ala. |
| Lowery, Maude | ----- | Diadem, Ala. |
| Lowery, Mattie | ----- | Diadem, Ala. |
| Lowery, Simpson | ----- | Diadem, Ala. |

| | |
|----------------------|-----------------|
| Lundy, Kathleen | Evergreen, Ala. |
| Lundy, Esther | Evergreen, Ala. |
| Lasseter, John | Evergreen, Ala. |
| Lasseter, Billie | Evergreen, Ala. |
| Murphy, Ida | Evergreen, Ala. |
| Murphy, Thacker Lee | Evergreen, Ala. |
| Murphy, Willie Laney | Evergreen, Ala. |
| Mason, Ida | Commerce, Ala. |
| Murphy, John | Evergreen, Ala. |
| Maucil, Addie | Evergreen, Ala. |
| McCreary, Marcella | Evergreen, Ala. |
| McCreary, Waddy | Evergreen, Ala. |
| McCreary, Sallie Lee | Evergreen, Ala. |
| McCreary, Roberta | Evergreen, Ala. |
| McCreary, Stanley | Evergreen, Ala. |
| McCreary, Ruby | Evergreen, Ala. |
| Moorer, Crum | Evergreen, Ala. |
| Moorer, Huber | Evergreen, Ala. |
| Moorer, Herbert | Evergreen, Ala. |
| Moorer, Roy | Evergreen, Ala. |
| Moorer, Lilla | Evergreen, Ala. |
| Moorer, Oscar | Evergreen, Ala. |
| McCreary, Olive | Evergreen, Ala. |
| McCreary, Dorothy | Evergreen, Ala. |
| McCreary, Mary | Evergreen, Ala. |
| McCreary, Elizabeth | Evergreen, Ala. |
| Mixon, John | Evergreen, Ala. |
| Mixon, Lois | Evergreen, Ala. |
| Mixon, Preston | Evergreen, Ala. |
| Mixon, Burett | Evergreen, Ala. |
| Moore, Mary | Evergreen, Ala. |
| Moore, Carrie | Evergreen, Ala. |
| Mancil, Lottie | Evergreen, Ala. |
| Moorer, Randolph | Evergreen, Ala. |
| Mixon, Grace | Evergreen, Ala. |
| Millsap, Willie | Evergreen, Ala. |
| Millsap, Lorena | Evergreen, Ala. |
| Mason, Eugene | Evergreen, Ala. |
| Mancil, Annie | Evergreen, Ala. |
| Mason, Ethel | Evergreen, Ala. |
| Moorer, Henry | Evergreen, Ala. |

| | |
|---------------------|---------------------------------|
| McKittrick Ella | Evergreen, Ala. |
| McKittrick, Wilfred | Evergreen, Ala. |
| Millsap, Ralph | Evergreen, Ala. |
| Moorer, Hugh | Evergreen, Ala. |
| Mixon, Mamie | Evergreen, Ala. |
| Mixon, Mattie | Evergreen, Ala. |
| McClure, Herbert | (Butler Co.,) Garland, Ala. |
| Moorer, Erle | Evergreen, Ala. |
| Moorer, Milton | Evergreen, Ala. |
| Moorer, Grady | Evergreen, Ala. |
| Moorer, Annie | Evergreen, Ala. |
| | |
| Nelson, Ruby | Evergreen, Ala. |
| Nelson, Whitfield | Evergreen, Ala. |
| Northcutt, Huborn | Evergreen, Ala. |
| Noble, Mary Jo | Evergreen, Ala. |
| Noble, Catheryn | Evergreen, Ala. |
| | |
| Page, Robert | Evergreen, Ala. |
| Page, Snowdie | Evergreen, Ala. |
| Powell, Nellie | Evergreen, Ala. |
| Powel, Horace | Evergreen, Ala. |
| Phillips, Isabel | (Dallas Co.,) Selma, Ala. |
| Peterson, Lizzie | (Monroe Co.,) Monroeville, Ala. |
| | |
| Rutland, Jeff | Evergreen, Ala. |
| Rutland, Mildred | Evergreen, Ala. |
| Rountree, Ben | Evergreen, Ala. |
| Rabb, Forte | Evergreen, Ala. |
| Rabb, Ruby | Evergreen, Ala. |
| Rabb, Naomi | Evergreen, Ala. |
| Rabb, Henderson | Evergreen, Ala. |
| Rabb, Aldine | Evergreen, Ala. |
| Rabb, Miriam | Evergreen, Ala. |
| Rutland, Hubert | Evergreen, Ala. |
| Riley, Autrey | Evergreen, Ala. |
| Riley, Robbie | Evergreen, Ala. |
| Riley, Andrew | Evergreen, Ala. |
| Robson, Wilsie | Evergreen, Ala. |
| Riley, Sadie | Evergreen, Ala. |
| Reynolds, Katie | Evergreen, Ala. |
| Reynolds, Fannie | Evergreen, Ala. |

| | |
|--------------------|----------------------------------|
| Reynolds, John | Evergreen, Ala. |
| Reynolds, Fred | Evergreen, Ala. |
| Seals, Fannie | Evergreen, Ala. |
| Seals, Robert | Evergreen, Ala. |
| Sawyer, Walter | Evergreen, Ala. |
| Sawyer, Leslie | Evergreen, Ala. |
| Salter, John | Evergreen, Ala. |
| Salter, Douglas | Evergreen, Ala. |
| Salter, Julia | Evergreen, Ala. |
| Salter, Mary Dent | Evergreen, Ala. |
| Salter, Paul | Evergreen, Ala. |
| Stallworth, Mary | Evergreen, Ala. |
| Savage, Virginia | Evergreen, Ala. |
| Savage, Charlie | Evergreen, Ala. |
| Stacey, John | (Monroe Co.,) Activity, Ala. |
| Stewart, John | Evergreen, Ala. |
| Shields, Terrence | Evergreen, Ala. |
| Shields, Charlie | Evergreen, Ala. |
| Stamps, George | Evergreen, Ala. |
| Sawyer, Dannie | Evergreen, Ala. |
| Savage, Richard | Evergreen, Ala. |
| Salter, Fannie | Evergreen, Ala. |
| Salter, Sallie | Evergreen, Ala. |
| Stewart, Grace | Evergreen, Ala. |
| Smith, Lucile | Evergreen, Ala. |
| Sheffield, Bettie | Herbert, Ala. |
| Sheffield, Martin | Herbert, Ala. |
| Sanderson, Cora | Evergreen, Ala. |
| Salter, Mary | Evergreen, Ala. |
| Strout, Torrey | Evergreen, Ala. |
| Strout, Sanford | Evergreen, Ala. |
| Stewart, Shade | (Covington Co.,) Rose Hill, Ala. |
| Tisdale, Cleveland | Evergreen, Ala. |
| Tisdale, Homer | Evergreen, Ala. |
| Tisdale, Cecil | Evergreen, Ala. |
| Tisdale, Gertrude | Evergreen, Ala. |
| Tisdale, Byran | Butler Co.,) Orestes, Ala. |
| Thompson, Bruce | Evergreen, Ala. |
| Thompson, Hugh | Evergreen, Ala. |
| Thomason, Florine | Evergreen, Ala. |

Tucker, Hugh-----Evergreen, Ala.
 Tucker, Ray-----Evergreen, Ala.
 Thompson, Joseph----- (Escambia Co.,) Pollard, Ala.

Varnadoe, Etta-- -----Evergreen, Ala.
 Varner, Clara-----Evergreen, Ala.
 Varner, Emma-----Evergreen, Ala.

Witherington, Virginia-----Evergreen, Ala.
 Witherington, Lucy-----Evergreen, Ala.
 Witherington, Sam-----Evergreen, Ala.
 Witherington, Leon-----Evergreen, Ala.
 Ward, Bryant-----Evergreen, Ala.
 Williams, Clyde-----Evergreen, Ala.
 Williams, Harmon-----Evergreen, Ala.
 Williamson, Pearl-----Evergreen, Ala.
 Williamson, Verna-----Evergreen, Ala.
 Williamson, Lois-----Evergreen, Ala.
 Wiggins, Herman-----Evergreen, Ala.
 Wiggins, Rivers-----Evergreen, Ala.
 Wiggins, Charlie-----Evergreen, Ala.
 Wiggins, Annie-----Evergreen, Ala.
 Whittle, Emma-----Evergreen, Ala.
 Whitley, Lila-----Evergreen, Ala.
 Whitley, D. C-----Evergreen, Ala.
 Walston, Bennie----- (Monroe Co.,) Natchez, Ala.
 Walston, Fronie----- (Monroe Co.,) Natchez, Ala.
 Watson, Ellen-----Evergreen, Ala.
 Walker, Janet-----Evergreen, Ala.
 Walker, Crumpton-----Evergreen, Ala.
 Ward, Wallace-----Evergreen, Ala.
 Williams, Louise-----Evergreen, Ala.
 Whittle, Ruth-----Evergreen, Ala.
 Whittle, Essie-----Evergreen, Ala.
 Waller, Clara May-----Evergreen, Ala.
 Wilson, Harold-----Chicago, Ill.

Yates, Bessie-----Gravella, Ala.

Total enrollment----- 309

Number of counties represented, 7.

