

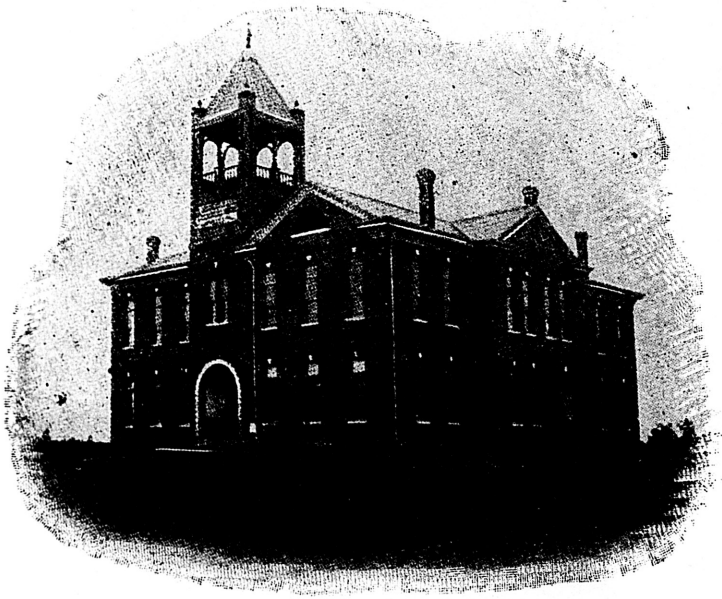
**Southeast Alabama
Agricultural School**
AND
Experiment Station

1909-1910



Abbeville, Alabama

RAILROAD
LIBRARY
MEMBER



MAIN BUILDING.

**Catalogue and Twenty First Annual
Announcement**

**Southeast Alabama Agricultural
School and Experiment
Station**



1908-1909

Abbeville, Alabama

CALENDAR

1909

September 15, Wednesday	Opening Exercises Entrance Examination and Matriculation First Term Begins
December 20, Monday	Christmas Holidays Begin

1910

January 3, Monday	Work resumed
January 18, Tuesday	Second Term Begins
May 23, Sunday	Commencement Sunday
May 25, Wednesday	Commencement Day

A
S
537
A2
568
1909-1910

9/2/94
cd

Board of Control.

His Excellency Hon. B. B. COMER, Governor-----Montgomery.
Hon. H. C. GUNNELS, Superintendent of Education-----Montgomery.
Hon. J. A. WILKINSON, Com. of Agriculture-----Montgomery.
Hon. M. V. CAPPS-----Abbeville.
Hon. GEORGE H. MALONE-----Dothan.
Hon. W. F. FEAGIN, Secretary-Treasurer-----Montgomery.

OFFICERS OF THE BOARD.

Governor B. B. COMER-----Chairman.
Hon. W. F. FEAGIN-----Secretary and Treasurer.

EXECUTIVE COMMITTEE.

Governor B. B. COMER-----Chairman.
Hon. H. C. GUNNELS, Hon. J. A. WILKINSON.

AGP 7414

SEP 21 1914
MONTGOMERY, ALA.
STATE ARCHIVES

Faculty and Officers.

CLARENCE J. OWENS, A. M., LL. D., President.
(Columbian University.)
English Language and Literature.

J. BUHRMAN ESPY, A. B., M. Sc.
(Howard College, Alabama Polytechnic Institute.)
Science and History.

MISS MARTHA ARMSTRONG.
(Peabody College for Teachers, University of Nashville.)
Mathematics and Latin.

THOMAS M. WILLIAMS, M. Sc.
(Alabama Polytechnic Institute.)
Assistant, High School Department.

MISS IDA HOLLEY.
(Judson College and Conservatory.)
Department of Music.

MISS LEILA M. JONES.
(Boston School of Expression, Student with Madame Alie Rozelle.)
Department of Expression.

MISS MARTHA ARMSTRONG.
Librarian.

EXPERIMENT STATION.

CLARENCE J. OWENS, Director.
J. BUHRMAN ESPY, Agriculturist.
W. R. HICKMAN, Farm Superintendent.

General Information.



IN PREPARING this announcement of the SOUTH-EAST ALABAMA AGRICULTURAL SCHOOL, the President has endeavored to give all the information necessary for those who think of patronizing the school. Owing to the multiplicity of subjects, however, and the brief space in which they must be treated, he has doubtless failed to be explicit on some points; so persons wishing further information are requested to write the President at Abbeville, Alabama, and he will answer fully and promptly any questions they may ask.

HISTORY.

The bill for the establishment of this school was passed by the Legislature in 1888-89, but the school is now under the government of an act passed by the Legislature of 1896-97. The annual appropriation to the nine Agricultural Schools was greatly increased by the Legislature in 1907.

The school is operated by a Board of Control, appointed by the Governor. The Governor, the Superintendent of Education and Commissioner of Agriculture are ex-officio members of the Boards of Control of the several agricultural schools of the State.

Of the several features of State education in Alabama during the last twenty years, it is probable that none has been watched more closely by a larger portion of the people than the State Agricultural schools. Originated as an experiment twenty years ago, with one trial school at Abbeville, the movement has increased until today there are nine large institutions, which during their short lives have already played an important part in the many departments of the State's life,

That these schools have borne with credit the searching scrutiny and criticism of people in all paths of life since the establishment of the system is in itself an evidence of their value. That they have accomplished results beneficial beyond question

to Agriculture, Alabama's pre-eminent industry, throughout the entire State, is a guarantee that they have come to stay and will be an important factor in the development of the State in the future.

While the Agricultural School movement is only a part of that larger move toward industrial training, which during the last score of years, has spread throughout the entire country, in this department, Alabama has been a pioneer. And the schools of this State have done for Alabama, in accordance with Alabama's needs, what the schools of the north and west have done for those sections.

PURPOSES OF THE SCHOOL.

1. To teach the principles of Scientific Agriculture, Horticulture, Floriculture, in both a theoretical and practical way, and to determine the best and most profitable methods of growing and cultivating the various crops in this section of the State.

2. To prepare young men and women for teaching in the public schools of Alabama, and for pursuing courses of study in the higher classes of the best colleges in the State.

3. To give, as far as possible, a thorough practical education, that they may be better fitted for the duties and responsibilities of life.

EXPERIMENT STATION.

The Experiment Station consists of a farm of about forty acres of land, twenty-five acres of which are in cultivation. The work of the Station has been directed to such experiments as would be beneficial to the farmers of this Congressional district.

The following subjects have received special investigation:

- (1) Chemical needs of the soil.
- (2) Remedies of physical defects of the soil.
- (3) Improvement of worn soil.
- (4) Rotation of crops.
- (5) Variety tests of corn.
- (7) Fertilizer tests with corn.
- (8) Fertilizer tests with cotton.

(9) Experiments with the different grasses and forage crops to see which are best adapted to this section.

(10) The theoretical and practical investigation in methods of cultivation.

The students are required to do a certain amount of work on the farm, and observe the operations performed, and become familiar with the best methods and most economic practices of horticulture and agriculture.

Instruction in agriculture is given by means of lectures, text-books, bulletins of the Agricultural Experiment Stations, and practical work in the field.

The study of agriculture begins with the first year grade and extends throughout the entire course.

BREEDING PLOTS.

Breeding plots of both corn and cotton have been established.

Last fall a careful selection was made of about 40 of the best stalks of Mebane's Triumph cotton which grew upon half an acre. The seed from each stalk will be planted in a row and selections will be made this fall in the same manner. We hope to have a heavy yielding cotton in a few years and one that will be early enough to escape the devastation of the boll weevil when it appears in Alabama. Similar methods will also be pursued with corn.

SCHOOL GARDEN.

A School Garden has been established on the campus. Quite a number of cereals and garden crops were planted, also several varieties of cotton. All the work is done by the students and the garden is used by them to study the nature and tendencies of different plants.

VISITS TO THE FARM.

Frequent trips are made by the students to the farm.

Last year the students assisted in making nearly all of the experiments.

These trips will be repeated this year. Demonstrations and talks will be given on the Station grounds, as well as in the

class room on corn judging and selection of seed corn along the same lines as the lectures given at the Farmers' Institute at Auburn.

The students assisted in making a soil survey of the Experiment Station, under the direction of Prof. G. B. Jones, who is an expert in the employ of the U. S. Government.

TO THE FARMERS OF THIS SECTION.

"We desire to say we extend to the farmers of this section a cordial invitation to visit the Station and see what is being done.

We are anxious to be of service to you in whatever way we can. If you have any experiment which you desire to have made, submit it to us and we will carefully and accurately carry out instructions. A report of the work will be made in our bulletins."—Annual Report of Experiment Station.

LOCATION.

Abbeville is located in a thickly settled section of Southeast Alabama, on a branch of the Atlantic Coast Line Railway, 140 miles southeast of Montgomery, and is easily accessible by railway from all parts of Alabama. It has long enjoyed a reputation for healthfulness, refinement and culture. Situated as it is, upon an elevated ridge, free from malarial poison, having a refined, cultured citizenship that feels a kindly interest and pride in every laudable undertaking, Abbeville offers advantages as an educational center such as few towns present.

CHURCH PRIVILEGES AND INFLUENCES.

There are Methodist and Baptist churches in the town with regular services in each every Sunday. The faithful pastors of each church are men in whom strangers can confide and obtain guidance and loving counsel.

This school is not sectarian, but the pupils, especially boarding students, are required to attend the church and Sunday School of their choice. Pupils, however, will be relieved of this duty upon request of parent or guardian.

Devotional exercises are held every morning in the chapel by the teachers and students.

BUILDING.

The two-story building is a handsome structure, built upon the best style of modern school architecture, with an admirably arranged assembly hall, class-rooms, art and music rooms, library, and cloak-rooms.

The school furniture is new and of the best modern style. The desks are the best manufactured, and were selected solely with a view to the convenience and comfort of the pupils. The auditorium, with a seating capacity of 800, is furnished with comfortable patent seats. The stage is large and well arranged. A beautiful drop curtain is provided for the stage, to be used when concerts, musicals, etc., are given. The entire building in the winter is warmed by heaters, which makes it pleasant and comfortable on the coldest day.

EXAMINATIONS.

Students will be carefully examined on entering and assigned to the class to which they rightly belong. *Under no circumstances will students be allowed to enter higher than they are prepared to go*, as this would tend to disorganize classes, besides discourage the students in not being able to advance from having entered too high a class.

In addition to the daily recitation, written examinations embracing the subjects for a given time are held twice during each session and at such other times during the session as may be expedient. The purpose of these examinations is to test the proficiency of each pupil and to determine whether or not he is prepared to pass to a higher class or to graduate. In order to pass, pupils of all classes must make an average of sixty per cent. in each study.

DISCIPLINE.

The system of discipline will have for its object to secure with as much mildness as possible prompt and cheerful obedience, a quiet and respectful demeanor toward the school authorities, and orderly conduct everywhere. With the hearty co-operation of the parents, occasions for punishing

will be rare. Suffice it to say, in a general way, that the government will be the very best experienced, conscientious and loving teachers can make it.

The Institution realizes the obligation and the responsibility arising from the sacred trust to be committed by parents and guardians to its care, and will endeavor to surround its pupils with the refining influences and generous sympathies of home life. It will seek to develop high culture and character. To this end special attention will be given to training the mind and heart.

It is the purpose of those in authority to make the Institution grow in efficiency as it grows in years and thus commend itself to all who have sons and daughters to educate. The school offers thorough training, a complete curriculum, supported by able and experienced teachers.



Graduates.

During Commencement week, on May 21, 1907, the graduates of the school were organized into an Association. The object of the society is to unite the graduates in a common bond of fellowship and to foster their love for their Alma Mater. Dr. L. S. Nichols of the Class of 1894 was elected temporary chairman. The following officers served for the first year:

- President—Dr. Thomas L. Hutto, Class of 1899.
- Vice-President—Prof. William Pitman, Class of 1906.
- Secretary—Mr. Edmund Bunker, Class of 1903.
- Treasurer—Miss Ida Holley, Class of 1903.
- Orator 1908—Rev. T. M. Fleming, Class of 1907.

The Association of Graduates met in annual session, on May 18, 1908. The oration was delivered by Rev. T. M. Fleming of the Class of 1907. The officers elected for the year are as follows:

- President—Mr. Thomas Neil Steagall, Class of 1908.
- Vice-President—Mr. James Dunn, Class of 1901.
- Secretary.—Mr. William J. Ward, Class of 1901.
- Treasurer—Miss Ida Holley, Class of 1903.
- Orator 1909—Prof. William Frances Murphy, Class of 1907.

The third annual meeting of the Association of Graduates was held on May 24, 1909. The oration was delivered by Prof. William Frances Murphy of the Class of 1907. The following officers were elected for the ensuing year, viz:

- President—Thomas Terry, Class of 1904.
- Vice-President—Austin H. Hawley, Class of 1909.
- Secretary—William Wakefield Dawkins, Class of 1908.
- Treasurer—Miss Ida Holley, Class of 1903.
- Orator 1910—Luther Dunn, Class of 1906.

GRADUATES PRIOR TO 1897-1898.

Henry B. Steagall-----Ozark, Alabama.
E. Perry Thomas-----Eufaula, Alabama.
Dr. L. S. Nichols-----Abbeville, Alabama.
Prof. J. Buhrman Espy-----Abbeville, Alabama.

Prof. James H. Davis	Abbeville, R. F. D., Alabama.
Walter W. Espy	Thomasville, Georgia.
Will J. Stewart	White Oak, Alabama.
Solon McLeod	Spring Hill, Alabama.
James R. Espy	Abbeville, Alabama.
Thomas D. Grubbs	Clayton, Alabama.
William Oates Howerton	Abbeville, R. F. D., Alabama.
William A. Trawick	Abbeville, Alabama.
Rev. William Prince	Ozark, Alabama.
William P. Saunders	Abbeville, Alabama.
N. M. Hawley	Coffee Springs, Alabama.
James Marley	White Pond, Alabama.
Thomas Searey	Eufaula, Alabama.
E. H. Hill	Dothan, Alabama.
M. B. Byrd	Dothan, Alabama.
Dr. H. C. Riley	Coffee Springs, Alabama.
Dr. J. L. Houston	Harris, Alabama.
Mrs. Pauline Martin	Mobile, Alabama.
G. W. Smith	Slocomb, Alabama

This list is not complete.

CLASS OF 1897-1898.

Mrs. W. W. Espy	Thomasville, Georgia.
Mrs. J. D. Daniels	Americus, Georgia.
Charles Allen Flowers	Montgomery, Alabama.
Miss Rose Lee Hawley	Abbeville, Alabama.
Mrs. James Saunders	Abbeville, Alabama.

CLASS OF 1898-1899.

Miss Carrie Stewart Clendinen	Abbeville, Alabama.
Miss Fannie Grice	Kinsey, Alabama.
Prof. Dallas Tabor Herndon	Auburn, Alabama.
Dr. Dorsey Julian Parker	Brewton, Alabama.
John Darby Espy	Abbeville, Alabama.
Dr. Little Thomas Hutto	Newville, Alabama.

CLASS OF 1899-1900.

Rev. James Clendinen	Abbeville, Alabama
Dr. Marvin Scott	Headland, Alabama

CLASS OF 1900-1901.

Stewart Brown	Royston, Georgia.
Miss Jennie Clarke	Abbeville, Alabama.
James Dunn	Abbeville, Alabama.
Vandy Forrester	Cowarts, Alabama.
Mrs. R. K. Stokes	Abbeville, Alabama.
Dr. Aaron Hutto	Abbeville, Alabama.
Prof. Haley Lisenby	Cureton's Bridge, Alabama.
Miss Lena Miller	Montgomery, Alabama.
Mrs. Hattie Eason	Ozark, Alabama.
Miss B. B. Hays	Abbeville, Alabama.
Roscoe Scott	Ensley, Alabama.
William Ward	Abbeville, Alabama.

CLASS OF 1901-1902.

Lawson Forrester	Cowarts, Alabama.
Miss Willie Snell	Dothan, Alabama.
Vandiver Herndon	Elberton, Georgia.
Mrs. William Fuller	Montgomery, Alabama.
Harold Thornton	Elberton, Georgia.

CLASS OF 1902-1903.

Dr. Wilmer Box	Graceville, Florida.
Edmund Bunker	Arran, Florida.
Miss Sanford Clarke	Abbeville, Alabama.
Mrs. Aaron Hutto	Abbeville, Alabama.
Miss Ida Holley	Abbeville, Alabama.

CLASS OF 1903-1904.

Prof. Leonidas Barnett	Grayson, Alabama.
Miss Ruth Bradley	Abbeville, Alabama.
Miss Pearl Clarke	Abbeville, Alabama.
Carl Reaves	White Oak, Alabama.
Thomas Terry	Baltimore, Maryland.
Miss Lois Williams	Ashford, Alabama.
Mrs. Howard Hood	Ozark, Alabama.

CLASS OF 1904-1905.

Augustus Hawley	-----	Abbeville, Alabama.
William Holley	-----	Brewton, Alabama.
William Howell	-----	Dothan, Alabama.
Prof. Oscar Tompkins	-----	Dothan, Alabama.

CLASS OF 1905-1906.

Luther Dunn	-----	Abbeville, Alabama.
Miss Clara Pearson	-----	Eclectic, Alabama.
Prof. W. I. Pittman	-----	Dothan, Alabama.

CLASS OF 1906-1907.

Miss Lola Clark	-----	Abbeville, Alabama.
Miss Daisy Mary Espy	-----	Abbeville, Alabama.
Rev. Thomas Marion Fleming	-----	Headland, Alabama.
R. O. Simpson Hood	-----	Birmingham, Alabama.
William Frances Murphy	-----	Abbeville, R. F. D., Alabama.
Harry Kennedy Martin	-----	Abbeville, Alabama.
John Thomas McArthur	-----	Ashford, Alabama.
Robert Franklin Ray	-----	Ray, Alabama.
Miss Mary Steagall	-----	Abbeville, Alabama.
Frederick Earle Steagall	-----	Abbeville, Alabama.
Bart Dannelly Stephens	-----	Louisville, Alabama.

CLASS OF 1907-1908.

Horace Milton Daniel	-----	Chipley, Florida.
William Wakefield Dawkins	-----	Abbeville, Alabama.
Alto Lee Espy	-----	Abbeville, Alabama.
Loyd Jerome Hawley	-----	Abbeville, Alabama.
Rufus Levi King	-----	Ashford, Alabama.
Lilla Kennedy	-----	Abbeville, Alabama.
Michael Jones Lingo	-----	Edwin, Alabama.
James Benjamin Long, Jr.,	-----	Abbeville, Alabama.
Charles Trawick Laney	-----	Abbeville, Alabama.
Philip Alfred McDaniel, Jr.,	-----	Abbeville, Alabama.
Mattie Beryl Perry	-----	Seale, Alabama.
Eloise Elizabeth Searcy	-----	Abbeville, Alabama.

Thomas Neil Steagall.....	Abbeville, Alabama.
Lollie C. Tiller.....	Abbeville, Alabama.
Richard Christopher Ward.....	Thomasville, Georgia.
Melvin Genoa Wingham.....	Blue Springs, Alabama.

CLASS OF 1908-1909.

Churvis V. Capps.....	Capps, Alabama.
Annie Clarke	Abbeville, Alabama.
Sterling L. Curry.....	Abbeville, R. F. D., Alabama.
Malissie Dunn	Abbeville, R. F. D., Alabama.
James Edward Dunn.....	Abbeville, R. F. D., Alabama.
Bessie Hudspeth	Abbeville, Alabama.
Austin H. Hawley.....	Abbeville, Alabama.
A. Tomlin Kendrick.....	Birmingham, Alabama.
Bertha Orr	Clayton, Alabama.
Grover Reeder	Blue Springs, Alabama.
Frances Wood	Abbeville, Alabama.

SENIOR CERTIFICATES, COMPLETE COURSE WITH EXCEP-
TION OF MATHEMATICS.

Sellers Riley	Newton, Alabama.
MacCrellous Sporman	Headland, Alabama.
Lloyd Warr	Abbeville, Alabama.

GRADUATES AND STUDENTS WHO HAVE ATTAINED HIGH
HONORS.

Hon. E. Perry Thomas, a lawyer of distinction, Senator from Barbour County and President pro tem of the Senate.

Hon. Henry B. Steagall, a lawyer of distinction, Representative of Dale County in the House, Solicitor Third Judicial Circuit, State of Alabama.

Hon. Thomas D. Grubbs, Judge of Probate of Barbour County.

Prof. J. Buhrman Espy, graduate of Howard College and the Alabama Polytechnic Institute. Agriculturist and Professor of Science, Third District Agricultural School.

Prof. James H. Davis, deceased, served for three years as president of the Third District Agricultural School.

Dallas Tabor Herndon, graduate of Alabama Polytechnic Institute. In competition with 200 applicants, he recently won a fellowship in the historical department of the University of Chicago.

Dr. Little T. Hutto, graduate of the Medical College, Mobile, Ala., with first honor, receiving the Bush Prize.

Lieutenant Thomas A. Terry, graduate of the United States Military Academy, West Point. Now stationed at Fort McHenry, Maryland, in the 142nd Coast Artillery.

Prof. E. Franklin Monk, president of the First District Agricultural School, Jackson, Ala.

Prof. James Doster, Professor of Secondary Education, University of Alabama, representing the General Education Board of the United States.

Miss Ruth Bradley, graduated with high honor at Mary Baldwin College, Staunton, Virginia.

Hon. Earnest H. Hill, of Dothan, Alabama, has attained distinction as a lawyer and has for years held the responsible position as County Solicitor of Houston County.

Prof. Oscar Tompkins has served with distinction for three years as the teachers of English and History in the Dothan High School and for session 1909-1910 will preside as Principal of the Dothan High School.

Prof. William I. Pittman has recently graduated with distinction from the Alabama Polytechnic Institute and has been elected Principal of the Grammar School in Dothan, Alabama.

Rev. Thomas Marion Fleming, pastor of the Headland Baptist Church, is making a brilliant record in the leadership of his church. He has recently led his people in the erection of a \$10,000 church building.

Harry Kennedy Martin graduated with distinction in the Law Department of the University of Alabama, in the Class of 1909. He won a medal for oratory during his senior year. Mr. Martin has become a member of the firm of Pollard & Martin, of Abbeville, Alabama.

Bart Dannelly Stephens graduated at the Alabama Polytechnic Institute and won a scholarship in the Theological Department of Vanderbilt University.

Many students have attained distinction in their high educational work, in agriculture, in commercial life and in the professions of law, medicine and the ministry.



OFFICERS.

Medals and Honors Awarded in 1909.

General Scholarship Medal—Bessie Hudspeth.

Medal for Best Speech or Essay, Junior Class—Yancey Fleming.

Medal for Freshman-Sophomore Declamation—Sam Wood, Jr.

Ready Debater's Medal—W. Yancey Fleming.

Medal for Agricultural Essay—G. Sellers Riley.

Military Medal—Thurman Campbell.

Medal for Affability—G. Sellers Riley.

Music Medal—Lucile Hawley.

Austin H. Hawley appointed by Hon. Henry D. Clayton, M. C., to take the examination for the Annapolis Cadetship.

Inter-Agricultural School Oratorical Contest, held at Wetumpka, Ala. Nine schools represented. Medal won by William Wakefield Dawkins.

Inter-Agricultural School Essay Contest. Nine schools represented. Medal won by Philip Alfred McDaniel, Jr.

Distinguished Students.

Pupils who average 90 per cent. in all subjects for the year are entitled to have their names on the Honor Roll.

SENIOR CLASS.

Sterling L. Curry-----Abbeville, R. F. D., Alabama.
Bessie Hudspeth -----Abbeville, Alabama.
Austin H. Hawley-----Abbeville, Alabama.
A. Tomlin Kendrick-----Birmingham, Alabama.

SOPHOMORE CLASS.

Eva Faulk -----Abbeville, Alabama.

FRESHMAN CLASS.

Joseph Griffin -----Newville, Alabama.
Lucile Hawley -----Abbeville, Alabama.
Lucile Solomon -----Abbeville, Alabama.
William Steagall -----Abbeville, Alabama.

SIXTH GRADE.

William Bradley -----Abbeville, Alabama.

FIFTH GRADE.

Dewey Griffin -----Abbeville, R. F. D., Alabama.
Lizzie Kate Hendley-----Montgomery, Alabama.
William McLain -----Abbeville, Alabama.

FOURTH GRADE.

Maree Bland -----Abbeville, Alabama.
Rupert Espy -----Abbeville, Alabama.
C .B. Galloway -----Abbeville, Alabama.
Ruby Johnston -----Abbeville, Alabama.
Henry Laney -----Abbeville, Alabama.
Mary Miller -----Abbeville, Alabama.

Lucile McDaniel	-----	Abbeville, Alabama.
Wattie Nordan	-----	Abbeville, Alabama.
Willie Newman	-----	Abbeville, Alabama.
Mary Roberts	-----	Abbeville, Alabama.
Emmett Solomon	-----	Abbeville, Alabama.
Lena Sachar	-----	Abbeville, Alabama.
Robbie C. Wood	-----	Abbeville, Alabama.

THIRD GRADE.

Gertha Chambliss	-----	Abbeville, Alabama.
Carrie Carr	-----	Abbeville, Alabama.
Homer Carr	-----	Abbeville, Alabama.
J. D. Griffin	-----	Abbeville, Alabama.
Neile Miller	-----	Abbeville, Alabama.
Carolyn Pollard	-----	Abbeville, Alabama.
Willie Roberts	-----	Abbeville, Alabama.
Ruby Solomon	-----	Abbeville, Alabama.
Arthur Searcy	-----	Abbeville, Alabama.
Dan Gordon Steagall	-----	Abbeville, Alabama.
Juanita Stokes	-----	Abbeville, Alabama.
Annie Bell Trawick	-----	Abbeville, Alabama.

SECOND GRADE.

Lee Bland	-----	Abbeville, Alabama.
Laura Bradley	-----	Abbeville, Alabama.
Hobson Davis	-----	Abbeville, Alabama.
Minnie Gable	-----	Abbeville, Alabama.
Una McDaniel	-----	Abbeville, Alabama.

FIRST GRADE.

Rebecca Kirkland	-----	Abbeville, Alabama.
Murpha Nobles	-----	Abbeville, Alabama.
Ruby Nordan	-----	Abbeville, Alabama.
Marie Louise Owens	-----	Abbeville, Alabama.
Alberta Steagall	-----	Abbeville, Alabama.
Meyer Saunders	-----	Abbeville, Alabama.
Willie Solomon	-----	Abbeville, Alabama.

Honors for 1909-1910.

The following honors have been established as an incentive to greater effort:

THE FACULTY MEDAL.—Given by the Faculty of school for the pupil who excels in scholarship and perfect deportment.

THE STEAGALL MEDAL.—Given by Dr. A. S. Steagall for the best speech or essay in Junior Class.

THE WARD MEDAL.—Given by Hon. John B. Ward to the best declaimer of the Sophomore-Freshman Classes.

READY DEBATERS MEDAL.—Given by Hon. N. F. Cheairs for the best debater in school.

THE AGRICULTURE MEDAL.—Given by Professor J. B. Espy for the best essay on agriculture.

THE PENMANSHIP MEDAL.—To be awarded to the pupil who makes greatest improvement in writing.

THE MILITARY MEDAL.—Given by President Owens to the best drilled cadet.

MEDAL FOR AFFABILITY.—Given by Prof. Dow Levi Perry, Jr.

THE MUSIC MEDAL.—Given by Director of Music.

Certificates of honorable promotion will be awarded at end of session to regular pupils who make an average of 90 per cent. in all subjects and are perfect in deportment. Their names will also appear on honor roll in catalogue the following year.

Each student contesting for prizes or honors is required to pass on all examinations in his class for the year, and to have pursued a full course leading to a diploma or certificate.

DIPLOMAS.

Diplomas are awarded to those pupils who complete satisfactorily the course of study prescribed in this catalogue, but no degrees are conferred.

AGRICULTURAL SCIENTIFIC COURSE.

FIRST YEAR.

First Term.

	Hours Per Week
<i>Agriculture—Duggar's</i> -----	3
<i>Agriculture—Practical work</i> -----	1
<i>Science—Davis' Elementary Physical Geography</i> -----	2
<i>English History—Montgomery</i> -----	3
<i>Mathematics—Colaw & Ellwood's Advanced Arithmetic</i>	5
<i>English—Reed & Kellogg; Rhetoric—Lockwood & Emerson</i> -----	5
	24

Second Term.

	Hours Per Week
<i>Agriculture—Duggar's</i> -----	3
<i>Agriculture—Practical work</i> -----	1
<i>Science—Davis' Elementary Physical Geography</i> -----	2
<i>English History—Montgomery</i> -----	3
<i>Mathematics—Arithmetic—Colaw & Ellwood</i> -----	5
<i>Mathematics—Algebra—Milne's High School</i> -----	5
<i>English—Rhetoric and Composition—Lockwood & Emerson</i> -----	5
	24

SECOND YEAR.

First Term.

	Hours Per Week
<i>Agriculture—Soils and Crops—Morrow & Hunt</i> -----	5
<i>Agriculture—Practical work</i> -----	5
<i>Science—Overton's Advanced Physiology</i> -----	4
<i>History—Myers' Ancient</i> -----	3
<i>Mathematics—Milne's High School Algebra</i> -----	5
<i>English—Rhetoric and Composition—Lockwood & Emerson</i> -----	5
	23

Second Term.

	Hours Per Week
<i>Botany</i> —Bailey's Beginners -----	5
<i>Botany</i> —Practical work -----	1
<i>Science</i> —Overton's Physiology -----	4
<i>History</i> —Myers' Ancient -----	3
<i>Algebra</i> —Milne's High School, Completed -----	5
<i>English</i> — <i>Rhetoric and Composition</i> —Lockwood & Emerson -----	5
	<hr/> 24

THIRD YEAR.

First Term.

	Hours Per Week
<i>Agriculture</i> —Stock Lectures ; Agricultural Literature -----	2
<i>Agriculture</i> —Practical Work -----	1
<i>Physics</i> —Hoadley's Elements and Laboratory work -----	5
<i>History</i> —Myers' Mediaeval -----	3
<i>Mathematics</i> —Arithmetic revie'd—Sensenig & Anderson -----	3
<i>Mathematics</i> —Plane Geometry—Wentworth -----	5
<i>English</i> —Halleck's English Literature -----	5
	<hr/> 24

Second Term.

	Hours Per Week
<i>Agriculture</i> —Goff's Principles of Plant Culture -----	2
<i>Botany</i> —Bergen's "Elements of Botany" Revised -----	3
<i>Botany</i> —Practical work -----	1
<i>Science</i> —Hoadley's Physics and Laboratory work -----	5
<i>History</i> —Myers' -----	3
<i>Mathematics</i> —Wentworth's Plane Geometry -----	5
<i>English</i> —Halleck's English Literature -----	5
<i>Pedagogy</i> —Bagley's Theory & Practice and School Laws -----	3
	<hr/> 27

FOURTH YEAR.

First Term.

	Hours Per week
<i>Agriculture</i> —Dairying, Soils and Fertilizers-----	5
<i>Science</i> —Chemistry and Laboratory work----- McPherson & Henderson.	5
<i>History</i> —Adams & Trent; <i>Civics</i> —Willoughby-----	3
<i>Mathematics</i> —Wentworth's Solid Geometry-----	3
<i>Mathematics</i> —Plane Trigonometry. Wentworth's-----	2
<i>English</i> —Matthews' American Literature-----	5
	<hr/> 23

Second Term.

	Hours Per week
<i>Agriculture</i> —Agricultural Literature -----	5
<i>Science</i> —McPherson & Henderson, Chemistry and labor- atory work -----	5
<i>History</i> —Adams & Trent; <i>Civics</i> —Willoughby-----	3
<i>Mathematics</i> —Wentworth's Plane Trigonometry and sur- veying -----	5
<i>English</i> —Matthews' American Literature-----	5
	<hr/> 23

AGRICULTURAL CLASSICAL COURSE.

FIRST CLASS.

Omit Physical Geography and History from Agricultural-Scientific Course and enter Collier & Daniels First Year Latin, five hours.

SECOND CLASS.

Omit Physiology and Agriculture from Agricultural-Scientific Course and enter Allen & Greenough's Caesar, Latin Composition, D'Ooge, five hours per week.

THIRD CLASS.

Omit Stock Lectures and Agriculture from Agricultural-Scientific Course and enter Allen & Greenough's Cicero—Six Books and D'Ooge Grammar, based on Cicero, five hours per week.

FOURTH GRADE

Omit Soils and Fertilizers and Agricultural Literature from Agricultural-Scientific Course and enter Allen & Greenough's Virgil, five hours per week.

In the first and second year's McKuffey's Revised Eclectic Spelling and in third and fourth years Hunt's Progressive Spelling may be used.

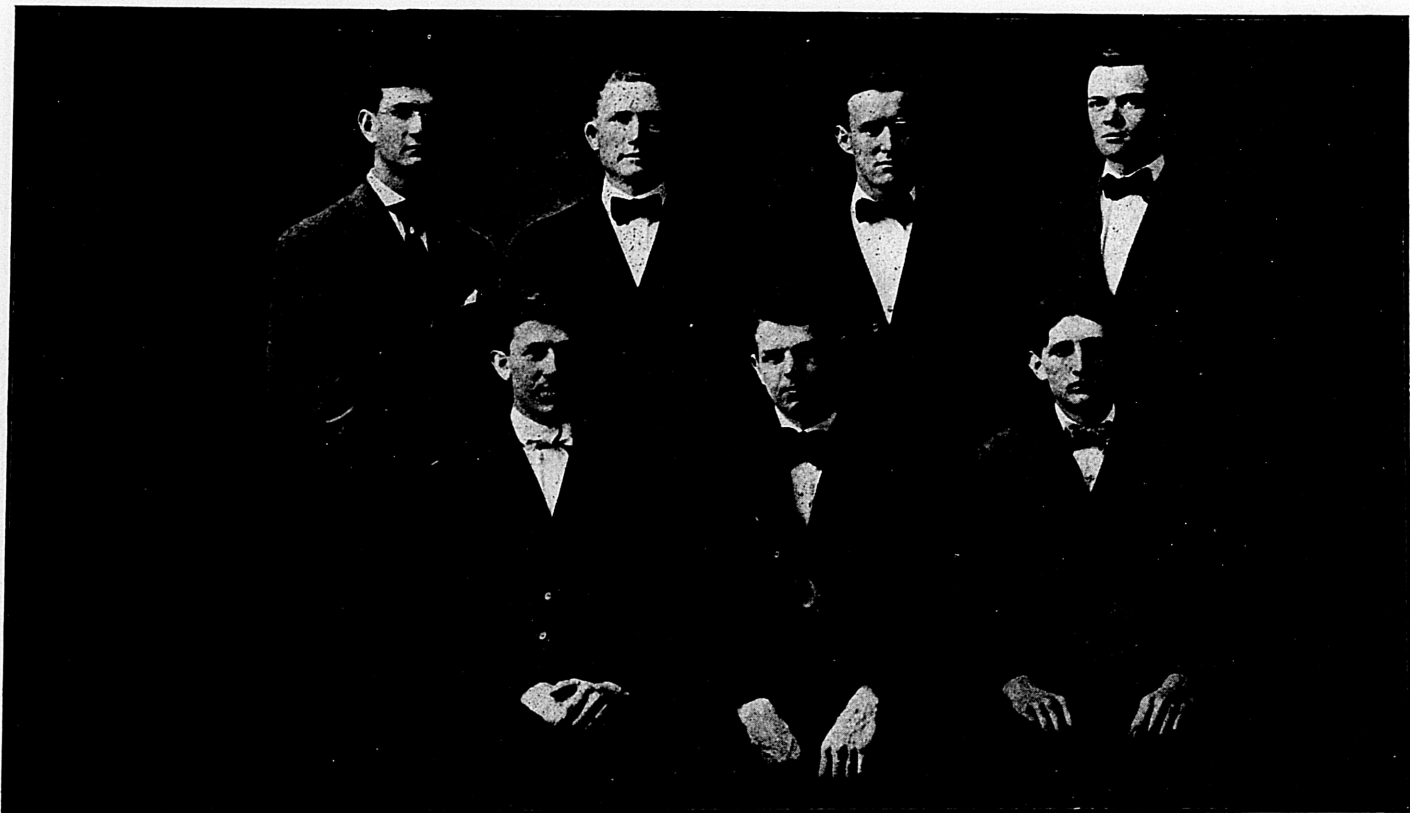
In the course in agriculture, the student will be required to read bulletins on the subjects of study from the State Stations and from the U. S. Department of Agriculture.

In the course in English the student will be required to read the college entrance requirements.

Penmanship and Orthography will be required throughout the course.

The regulation requiring the students to work two hours a week in the Experiment Station will be rigidly enforced.

At the option of an institution, bookkeeping, with special reference to farm accounts, may be substituted for Agricultural Literature in the second term of the Fourth Class.



THE S. E. A. A. S. CLUB.
Alabama Polytechnic Institute.

Special Departments.

MUSIC.

The study of Music is based upon a high standard. Those who desire to accomplish anything of real value in this art, must not regard it as a pastime or amusement, but as a serious and very important study. They must not content themselves with mere drumming on the piano or other instrument, but should earnestly endeavor to interpret correctly the works of classic and modern masters. In this way only can they reach the high artistic taste.

Music, both as an art and as a science, is not excelled by any educational branch, as a means of developing a broad mental grasp, and retentive memory. The leading educators of today emphasize the fact that music is one of the chief branches of education. The fact is more clearly understood when we think of music as a medium of expression through which all nationalities, of whatever clime or condition, convey feeling, emotion, sentiment and culture.

COURSE OF STUDY FOR THE PIANO.

GRADES I AND II.

Rudimentary Instruction.
Landon's Foundation Material.
Major and Minor Scales.
Kohler, Czerny Op. 849; Lieschorn, N. E., Con. method.
Pieces by Behr, Gurlitt, Spindler, Reinecke, Reinhold, Orth, Klein, Schumann.

GRADE III.

Mason's Touch and Technic (selected studies.)
Scales in Thirds and Sixths.
Czerny's School of Velocity.
Bach—Preludes and Inventions.
Heller—Op. 47.
Pieces by Jensen, Durand, Scharwenka, Borst, Godard, Hayden, Heller.

GRADE IV.

Mason's Touch and Technic continued.
 Arpeggios in all keys.
 Cramer Studies.
 Bach Inventions (Third Part.)
 Sonatas, Mozart and Beethoven.
 Pieces by Chopin, Henselt, Mendelssohn, Raff, Schubert,
 Liszt.

GRADE V.

Germer, Mason, Technical studies.
 Clementi—Gradus, (Tausiged.)
 Bach—Well Tempered Clavier—selections.
 Beethoven Sonatas.
 Pieces by Moszowski, Raff, Chopin, Handel, Rubenstein,
 Schumann, Saint-Saens, Liszt, and others.
 Tuition, per month, \$3.00.

 EXPRESSION AND PHYSICAL CULTURE.

1. Oratory.

This department is designed to teach Oratory as an art. It aims to develop in the student a knowledge of his powers in expression. Whether as a creative thinker or interpreter, the Orator must illustrate in his art the same steps of progress which governs the growth of other arts. The principles of natural evolution have been applied to the study of Oratory. Application of these laws is first set forth in the four volumes of Emerson's "Evolution of Expression." The laws of the "Evolution of Expression" are perfected in the four volumes of "Perfective Laws of Art." This course points out to the students those steps of expression in which he is most deficient, thus inspiring him to work until the strain and roughness disappears and the animation is made attractive.

2. Physical Culture.

We mean by Physical Culture the development and refinement of the entire physical person so as to express the pur-

pose and emotions of the soul. Exercises are given for the purpose of securing poise, presence and bearing; raising the vital organs to their normal height, strengthening the centers while freeing the surfaces; for respiration, for the development of special muscles.

COMMERCIAL.

In this progressive age no person's education is complete without a course of business training. Whether a man enters the commercial arena, adopts a profession, or in whatever direction life's duties lie, a business education is simply indispensable.

It is the object of this department to supply young men and young ladies with a really useful education. Within the last few years there has been a revolution in the methods of business training, and this school is abreast of the times—using the best methods. The Actual Business Practice Method is employed. The course is as thorough and complete as that given by the business colleges.

Students do not copy assumed transactions from text-books, but buy and sell goods and keep a record of all transactions as is done in actual business. They learn both double and single entry bookkeeping, and become familiar with the various business forms; they learn to open and to close a set of books, to change a set of books from single to double entry or from double to single entry, and to dispose of all work in a systematic way. This is not a theoretical course, but theory and practice go hand in hand.

Correct spelling, business penmanship, and commercial arithmetic, are emphasized.

To enter this department requires a working knowledge of arithmetic through Percentage, the ability to read and understand ordinary English and to write legibly.

It requires from six months to a school year to complete the course. The course includes Bookkeeping and Business Practice, Spelling, Plain Penmanship, Arithmetic, Essentials of English and Essentials of Commercial Law.

CLASS OF 1907.

John Fondren	Slocomb, Alabama.
Ulyses Jones	Newville, Alabama.
Churviss Capps	Capps, Alabama.
John Rish	Abbeville, R. F. D., Alabama.
Frank Ray	Ray, Alabama.

CLASS OF 1908.

Frederick Earle Steagall	Abbeville, Alabama.
John William Helton	Abbeville, Alabama.
Rufus Levi King	Ashford, Alabama.
Melvin Genoa Whigham	Blue Springs, Alabama.
Alto Lee Espy	Abbeville, Alabama.
Thomas Neil Steagall	Abbeville, Alabama.
William Wakefield Dawkins	Abbeville, Alabama.

ART.

This course includes Drawing and Painting, under the several divisions of Freehand, Crayon, Object and Antique Drawing, Sketching from Nature, Pastel, Painting in Oil and Water Colors, China Painting, Study of Form, Theory of Perspective, Study in Light and Shade from the Cast and from Life.

THE COURSE BY CLASSES.

Class I.—Elementary Drawing from Objects; Outline Drawings from Figures; Drawing from Still-Life; Elementary Perspective.

Class II.—Charcoal Drawing, Light and Shade in groups from Objects; Drawing and Coloring from an approved Model or from Nature; Elementary Perspective.

Class III.—Figure Drawing and Painting. Heads from Casts, Still-Life Groups from Objects; Landscapes from the Model and from Nature; Advanced Perspective and History of Art.

Class IV.—Painting in Oil, and Drawing from the Antique in Charcoal; Figures from the Antique; Still-Life Groups; Portrait Heads from Life shaded in Charcoal; Enlarged Portraits from the Photograph; History of Art and Advanced Perspective.

MILITARY.

Science teaches that the perfect man must be developed physically, mentally and morally and that each is dependent upon the other. He who is weak in body cannot attain, under similar circumstances, the standard of him who is bodily strong. Realizing the fact, that the physical development given by the military exercises is the best all round bodily culture, the military system is introduced. The "setting up" exercises strengthen the body, causing the development of a stout chest, giving straight shoulders and an erect and dignified bodily carriage; the drill and bayonet exercises give suppleness and activity in movement, invigorating the arm and leg muscles; and the regulations teach the boy obedience, cleanliness, promptness and duty at all times and under all circumstances. Hence, when the military system is introduced into the school, and made to conform to the requirements of the body, placing him upon his honor with just enough supervision from the Faculty to see that he is in his place and about his duty, the boy grows into the man in whose life duty and honor are held as sacred.

Under this department the Cadet Officers and Non-Commissioned Officers are taught Infantry Drill Regulations, Guard Manual, and Signaling with Flag. The military system is used as a means toward an end—and that is, to maintain discipline. Here the cadets while curbed and guarded in their actions, are made to reflect upon the dictum, "Order is Heaven's First Law."

 BATTALION ORGANIZATION.
Staff.

Adjutant and Captain.....	Austin H. Hawley.
Quartermaster and Captain.....	A. Tomlin Kendrick.
Sergeant Major.....	Wiley Deal.
Quartermaster Sergeant.....	Evytus Moring.
Color Sergeant.....	Raymond Corbitt.
Color Guard, Sergeants.....	Mays Clenny, James Tiller.

COMPANY "A."

Captain—Churvis V. Capps.
 First Lieutenant—Sterling Curry.
 Second Lieutenant—Grover Reed.
 Third Lieutenant—Lloyd Warr.
 First Sergeant—James Moring.
 Second Sergeant—James Steagall.
 Third Sergeant—Alto Whitehurst.
 Fourth Sergeant—Lamar Stephens.
 First Corporal—Yancy Fleming.
 Second Corporal—Hinton Capps.
 Third Corporal—John Howell.
 Fourth Corporal—Robert Watford.
 Fifth Corporal—Eugene Curry.

COMPANY "B."

Captain—MacCrelous Sporman.
 First Lieutenant—J. Edward Dun.
 Second Lieutenant—Max Hardwick.
 Third Lieutenant—G. S. Riley.
 First Sergeant—Frank Rish.
 Second Sergeant—Thurman Campbell.
 Third Sergeant—Quincy Burns.
 Fourth Sergeant—Lester Corbitt.
 First Corporal—Vann Capps.
 Second Corporal—Clarence Murphy.
 Third Corporal—Arrington Hendle.
 Fourth Corporal—Malcolm Roberts.
 Fifth Corporal—Malcolm Box.

EXPENSES.

No charges are made for tuition, except for the special courses. Tuition for the special courses is as follows::

Instrumental music, per month-----	\$3 00
Vocal music, per month-----	3 00
Elocution, per month-----	3 00
Commercial, per month-----	4 00

A matriculation fee of \$5 is charged each pupil at the beginning of each term. The fee must be paid before the pupil can enter classes. There will be no deviation from this rule.

UNIFORMS.

Students in Collegiate Department are required to wear uniforms. The rules in regard to this matter will be rigidly enforced. By wearing the uniform all are dressed alike, and there can be no social discrimination from outward appearance.

Each cadet will be required to purchase one fatigue uniform, consisting of one gray blouse coat, one pair gray trousers, one blue cap. Duck trousers will be added for the spring season.

The uniform will be secured for the students at actual factory cost.

BOARDING.

Students board in private families, at prices ranging from \$10 to \$12.50 per month for board and lodging. The homes of the best people in town are open to the pupils, and a wholesome atmosphere socially thus surrounds them. They enjoy, also, all the protecting and beneficial advantages of the family circle.

In no case, however, will boys and girls be allowed to board in the same house.

THESIS.

Each applicant for diploma or certificate is required to write and submit to the President an essay or oration, and read and deliver the same at commencement, if requested to do so. This must be handed in by April 1st.

ABSENCES.

"A lost day" is hard to recover at any business; but in school it is often lost forever. And sometimes days preceding are sadly compromised by the anticipation of the coming holiday or the visit to some friend or relative for a few days, and then the days which follow are demoralized by the irregularities in which the student has been indulging. A continuous session, with suitable hours for rest and recreation at regular intervals, has been found to be most conducive to progress and mental discipline. The course of study is arranged so as to require faithful and earnest application on the part of the student, and if he loses here he falls behind his class, becomes heavily burdened with recitations, which must be made up, and, as a consequence, loses hope, and sometimes drifts into a fatal carelessness. In view of these facts we discourage the idea of pupils being absent from school, and beg the patrons not to allow their children to be absent except in cases of providential hindrance. For the result of their being away is a loss of time, loss of standing in the class, loss of enthusiasm in study, and only a passing pleasure gained. The Faculty will arrange for all the recesses and holidays that can be safely and wisely made.

RECITATION AND REPORTS.

It is the constant aim of the Faculty to assign to each pupil as much work as he can do, and their constant care to see that *he does it*. *Idleness*, the bane of the students life, *will not be tolerated*. If it shall appear in any case that a pupil has no heart for his work, and cannot be brought to a sound mind on the subject, he will be kindly sent home, to be received back without prejudice when he gets up an inclination to study. The daily recitation affords ample opportunity to find out what the student is doing.

Reports showing the standing of pupils will be made at the close of each month. In case a student is careless in his work, and wastes his time, the parents will be promptly notified, and will thus be acquainted with the progress of the pupil. Their help is solicited in securing the best results and greatest success for their children.

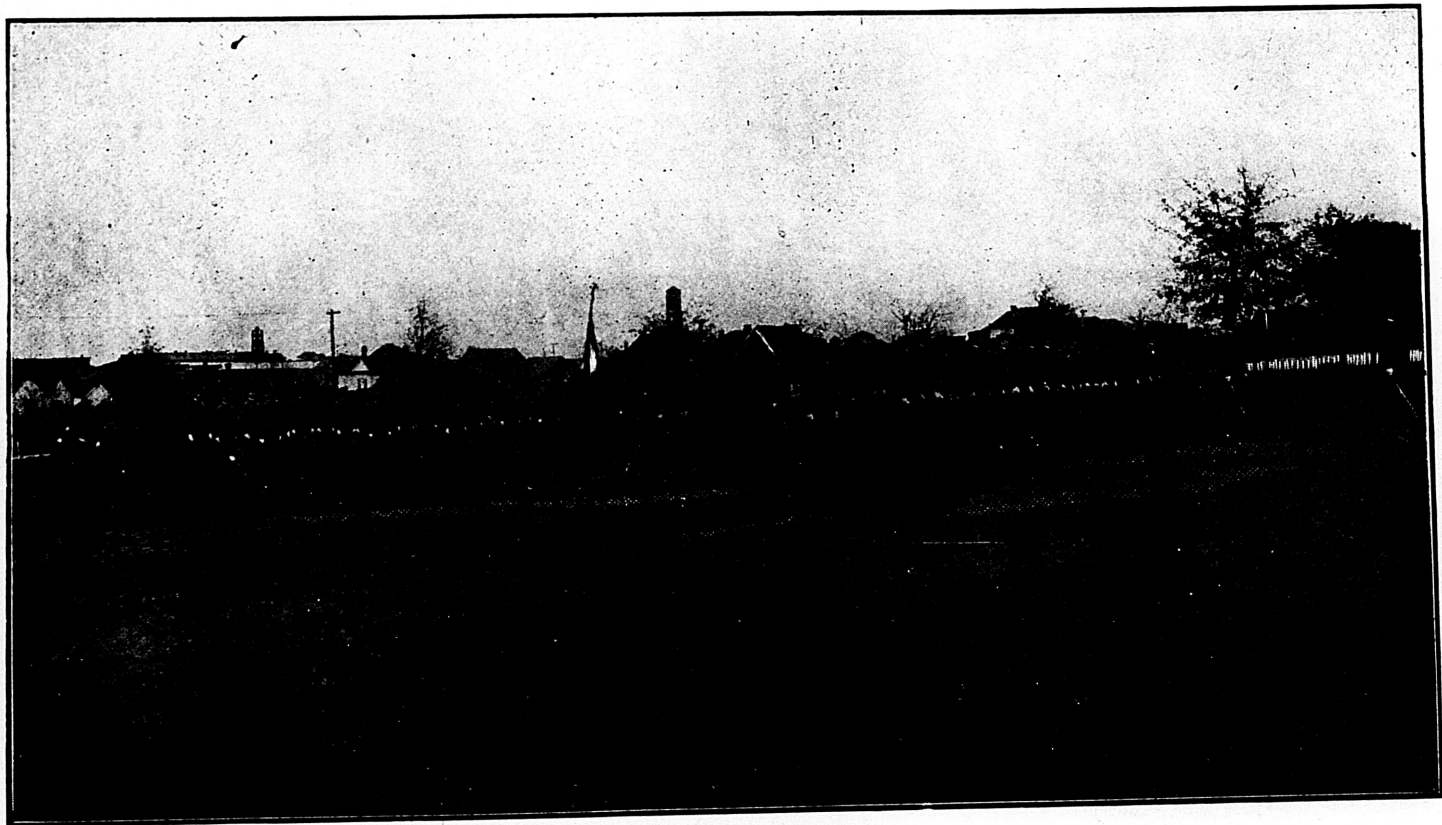
CO-OPERATION.

Parents patronizing the school are earnestly urged to frankly and freely confer with the President as to the progress of their children. If there are any difficulties in the way of achieving the best results, the President ought to know them. He will in all cases deal candidly with parents, and sympathetically, but also faithfully, with students. The education of children can not cease to be a responsibility because they are away in school. The home influence must combine with the school influences to secure the best results.

LIBRARY.

For many years the school did not offer to its pupils the advantages growing out of this valuable adjunct but the teachers in the past seven years, with the kind assistance of the pupils, and friends have been able to collect about two thousand volumes, including three valuable sets of encyclopdias, and many standard works of biography, fiction, history and travel.

The most comfortable room in the building, well-lighted and easily heated, has been set apart for the library room. This room is neatly carpeted and provided with nice reading



CADET BATTALION.

tables and chairs, so that at any period of the day, when pupils can spare the time from their regular course of study for the reading of some good book found in the library, they have the privilege of doing so.

A librarian is appointed from the Faculty whose duty it is to preserve order in the room, provide pupils with whatever books they wish, and see that the books taken from the library are recorded and an accurate account of same be kept. The librarian will have supervision of the library, and will keep it open at most convenient and suitable hours for the student-body and others who may wish books.

No books shall be taken from the shelves by *any one* except by consent of the *librarian*. The privilege of withdrawing books for a period of not exceeding two weeks will be granted to every pupil, *charges being made in cases of damage, loss of books, and keeping same overtime.*

Realizing the fact that no one is well educated who has not read at least some of the choice productions of the greatest literary authors, the teachers feel deeply interested in the mental and moral development of the pupils, and desire to give them ever yadvantage a good library affords.

Plans are about completed for a \$5,000 Carnegie Library Building to be erected on the school campus. From the Carnegie Library Fund \$2,500 will be received. The Board of Control has appropriated \$1,250 and the citizens of Abbeville have signed bonds to the amount of \$1,250.

IMPROVEMENTS.

In and around the building improvements are steadily going on each year. Five years ago the campus was treeless, but now has growing upon it more than two hundred water-oaks and magnolias. The grounds around the buildings are laid off symmetrically in beds and walks, upon which evergreens and quite a variety of flowers are planted. All this has been done by the pupils and teachers of the school.

The school has within the past three years been supplied with a chemical laboratory, globes, maps, charts, etc., making the work of the teachers more effective and thorough, and affording the pupils an unusual opportunity of learning the methods of scientific research.

The town of Abbeville, has installed a water-works plant, which furnishes an abundant supply of pure artesian water. The school is fitted up with sinks and lavatories, and the water is furnished free of charge by the city authorities.

During the past session, a physical laboratory was added to the Department of Science and additions were made to the chemical laboratory. To meet the demands, 3 dozen patent desks were added to the Agricultural School equipment. A part of the lands owned by the school was converted into a pasture. A registered short-horn bull and registered Jersey hogs have been purchased. From time to time registered stock will be added and stock raising be made a feature of the Station work. The dwelling on the Experiment Station was painted and repaired. To the orchard was added the following trees: 18 apples, 60 peach, 6 plums, 2 cherry, 2 apricots, 25 grapes, 4 figs.

After the erection of the library building, efforts will be made to erect a dormitory and a manual training building on the campus.

During the session the members of the Junior Class installed a complete system of electric lights in the Main Building.

LECTURES.

Lectures and entertainments will be given in the school auditorium during the session. The lectures will be upon subjects of interest to the students and patrons and to all thoughtful men and women who have the good of the State and its educational interests at heart.

During the past session the following visitors, lecturers, preachers and entertainers brought inspiration to the students of the school:

Dr. James Hedley, Cincinnati, Ohio.

Prof. Marvin Williams, Atlanta, Ga.

Walden, Magician, Philadelphia, Pa.

Otterbein Male Quartette.

Weeks' Concert Company.

Rev. E. S. Atkinson, Crawfordsville, Ga.

Rev. I. W. Chalker, Jackson, Ala.

Rev. H. T. Strout, Abbeville, Ala.

Rev. John F. Gable, Abbeville, Ala.
Rev. J. T. Mann, Fitzgerald, Ga.
Rev. T. M. Fleming, Headland, Ala.
Rev. F. M. Hauser, St. Matthews, S. C.
Rev. John James, Dothan, Ala.
Hon. Henry D. Clayton, Eufaula, Ala.
Hon. J. F. Thompson, Centerville, Ala.
Hon. W. C. Swanson, Montgomery, Ala.
Hon. J. A. Wilkinson, Montgomery, Ala.
Col. J. P. Copeland, Headland, Ala.
Judge A. A. Evans, Clayton, Ala.
Hon. Michael Solley, Ozark, Ala.
Hon. C. E. Crispin, Atlanta, Ga.
Mr. S. J. Cole, Birmingham, Ala.
Dr. E. N. Passmore, Abbeville, Ala.
Dr. Wilmer Box, Graceville, Fla.
Mr. J. L. Pollard, Abbeville, Ala.
Capt. W. W. Dawkins, Abbeville, Ala.
Prof. W. Frances Murphy, Enterprise, Ala.
Miss Minnie Kennedy, Opelika, Ala.
Hon. John H. Wallace, Montgomery, Ala.
Prof. R. Frank Ray, Clayton, Ala.
Drama, "Down in Dixie," by Student Talent.
Drama, "Aladdin" Chinese Romance, by Student Talent.
Inter-Agricultural School Oratorical Contest.

STUDENT ORGANIZATIONS.

The students are regularly organized for physical, literary, patriotic and religious activity. During the past session, intense interest was exhibited in the work, along the lines indicated above, and it is certain that the efforts of the students in gymnastics; in debate, oratory and composition; in studying patriotic ideals and in planting in their hearts the blessed truths of Christianity,—they have found new conceptions of life and duty, which will make them a power for good in society, politics, education and religion.

1. *Athletics*.—During the past session, the young ladies of the school have been given daily training in calisthenics and physical culture. The young men have been given daily training in the "setting-up exercises" and the military drill. In ad-

dition to the above the students have been organized for basket-ball, base-ball and tennis.

2. *Literary Societies.*—There are two literary societies in the Agricultural School. The past year has witnessed great improvement in the society work. Enthusiasm exists among the members of each society to the end that theirs may win more honors, or achieve the greater victory.

These societies afford excellent opportunities to the young men and young ladies for developing a taste for literature, and extemporaneous speaking. Each pupil is required to join one of the societies, and to pay a fee of twenty-five cents per term. The fund accumulated is used to purchase books for the library.

3. *Patriotic Organizations.*—The Agricultural School is the only school in the country, having a regularly organized Camp U. S. C. V. and a Chapter U. D. C. The Camp U. S. C. V. is named for General A. C. Gordon, and is a member of the First Brigade, Alabama Division of the Army of Tennessee Department. The Chapter U. D. C. is named for Mrs. Varina Davis and is associated with the Alabama Division. Regular monthly meetings are held, and interesting programs are rendered. Camp A. C. Gordon was represented by delegates at the reunion held in Richmond, Va., Montgomery, Ala., Birmingham, Ala., and Memphis, Tenn.

4. *Christian Association.*—The Y. M. C. A. and the Y. W. C. A. are important agencies for good in the religious work of the school. A large per cent of the students are active workers in the Associations. The members meet each week, and discuss questions of practical value in an effort to become cultured for service. These organizations call the students to a higher life and are productive of much good. The Christian associations were represented by delegates at the Alabama Student Conference held at Greensboro, Ala., and at Montevallo, Ala.

AUXILIARY SCHOOL.

The Southeast Alabama Agricultural School is listed as one of the Auxiliary Schools of the University of Alabama and the Alabama Polytechnic Institute. Students holding certificates from this school will be given full credit for their work, at the University and at Auburn.

COMPLIMENT FROM THE DEPARTMENT OF AGRICULTURE.

The following extract from a letter under date May 18, 1907, written by Hon. J. A. Wilkinson, Commissioner of Agriculture and Industries, will be read with interest by all friends of the school, as it indicates the high grade of work, which is being done by the students of the school along the line of Agriculture:

"We have had under consideration and careful study, the ten essays sent from your school, and five of our best men in the Capitol have read over these essays. I leave the annotations of the covers of each piece that you may read and get somewhat the opinions of the five experts who took part in rendering the final decision in favor of the essay headed "The Improvement of the Soil." It pains us all to have to make a decision against all the other most meritorious pieces. After a conference with the entire committee, including myself, we have unanimously agreed that the above selection is the very best we can do, and the gentlemen suggest, and the whole department here concur, in asking you to have printed, in pamphlet form, all of these essays for circulation; as we are of the opinion that nothing could be done to so stir the youth to the study of these practical, beautiful and I might say profound topics. * * * Let us congratulate all of these young men and women, as the case may be, on their most signal success. We confess we have been astonished and delighted with these several products. In the main, they adhere closely to their subjects, they are practical in the discussion of their themes, and the study of these essays will be the betterment not only to the youth of the State, but to our older people as well."

TESTIMONIAL FROM PRESIDENT THACH.

ALABAMA POLYTECHNIC INSTITUTE,
AUBURN, ALA.

June 27, 1908.

I beg to say that there were in attendance at the Alabama Polytechnic Institute during the Session 1907-1908 five young gentlemen who had received their previous education at the Southeast Alabama Agricultural School; and it affords me

the greatest pleasure to state that they ranked among the best students in the entire student body of over six hundred young men.

They showed accurate, scholarly training in all lines of academic work; and what is perhaps more important they had received an inspiration which filled them with enthusiasm for education. Their industry and devotion to their work were noted by all their Professors. They ranked at the head of their different classes.

Another commendable quality was their great interest in their literary societies, over half of the number of the young men being conspicuous in oratory and frequently bearing off the prizes. I am,

Very respectfully yours,

CHAS. C. THACH,
President.

FROM THE "GLOMERATA 1909."

The S. E. A. A. S. Club
Alabama Polytechnic Institute.
Graduates of the Southeast Alabama Agricultural School,
Abbeville, Alabama.

Motto: By constant labor we conquer.

OFFICERS.

W. M. Howell.....President
W. I. Pittman..... Vice-President
M. J. Lingo.....Secretary and Treasurer

MEMBERS.

W. M. Howell.....'05
L. J. Hawley.....'08
M. J. Lingo.....'08
W. I. Pittman.....'06
T. N. Steagall.....'08
B. D. Stephens.....'07
R. C. Ward.....'08
W. W. Dawkins.....'08

Commencement Exercises.

Sunday, May 23rd, 1909.

- 11:00 a. m. Commencement Sermon, Rev. John James, Dothan Ala.
8:00 p. m. Annual Celebration Y. M. C. A. and Y. W. C. A., Addresses by Rev. John F. Gable and Rev. H. T. Strout.

Monday, May 24th.

- 10:00 a. m. Freshman-Sophomore Declamation Contest and Military Contest.
3:00 p. m. Recital by Departments of Music and Expression.
8:00 p. m. Annual Reunion, Association of Graduates, Oration by William Frances Murphy, Class of 1907.
9:00 p. m. Debate, "Resolved, That Postal Savings Banks should be established by the United States Government.

Tuesday, May 25th.

- 10:00 a. m. Junior Oratorical Contest and Ready Speakers Contest.
8:00 p. m. Annual Recital by Departments of Music and Expression.

Wednesday, May 26th.

- 10:00 a. m. Essays and Orations by Graduating Class.
11:00 a. m. Annual Address by Hon. J. F. Thompson, Centerville, Ala.
12: m. Presentation of diplomas, Announcement of Honors, President Owens.

TEACHERS.

1. Pupils shall not be dismissed by the teachers before the regular time, unless by written request of parent or guardian, which request must be approved by the President.

2. All teachers shall become familiar with the rules and regulations, and observe and enforce them so far as they relate to the several departments; instruct the classes assigned them; protect the school property from injury as far as possible; report to the President any damage; keep all required records; and make such reports as he may think necessary to the proper management of the school.

3. Teachers are required to be in the building at least fifteen minutes before the opening of school, and under all circumstances remain at post of duty throughout the day's session except when absolutely necessary to be absent.

4. Teachers shall not receive attention from pupils, and vice versa.

5. All teachers shall exercise a vigilant care over the general conduct of pupils in the school room, on the play grounds, and as far as possible on their going to and returning from school.

6. Teachers must not introduce into the school room sectarian views on religion, or partisan views on politics, under penalty of removal.

7. All teachers shall maintain strict order and discipline in their classes, and aim at the greatest thoroughness and accuracy in giving instruction; and in case of failure in lessons, disobedience or disorder, may exercise the milder means of discipline, but in case of continued disobedience shall report the fact to the President.

8. Teachers are required to attend all regular and special meetings called by the President, and no excuse for absence is sufficient except such as would justify absence from a regular session of the school.

9. Teachers shall be required to enforce such discipline as will insure perfect neatness in the school room and to prohibit the use of tobacco on the premises.

PUPILS.

1. All pupils will be required to attend regular school recitations regardless of special departments.

2. During session of school no regular pupil will be permitted to take a course of instruction in any branch away from the building when the same instruction can be obtained at school.

3. On arrival at school in the morning no pupil will be allowed to engage in any kind of a game, but go quietly to his seat and observe good order.

4. All pupils, when absent from any cause from recitation work, are required to make up same, or else have zero marks for every absence.

5. No pupil shall be allowed to absent himself from any regular or special examination, or public exercises of the school or class.

6. The boarding pupils are directly under the charge of the President and teachers.

7. All pupils must abstain from any communication with each other during school hours, whether by speaking, by writing, or by signs.

8. Whenever the example of any pupils shall become injurious on account of his indolence, neglect of rules, or any other cause, and reformation shall appear hopeless, the President shall request his withdrawal from the school.

9. Wilful disobedience, vulgarity, profanity, carrying deadly or dangerous weapons, persistent violation of any of the rules of the school, or any other gross misconduct, shall constitute good cause for suspension or expulsion.

10. Pupils who injure or destroy any of the property of the school shall be requested to pay in full for the damage. Should any pupil fail to make payment for same after being urged to do so, he will be subject to suspension from school, and not allowed to return until payment is made. Damages will be assessed and collected by the President.

11. Should any pupil be reported for drinking or drunkenness, and the same be proven, he shall be expelled.

12. Pupils or parents having cause for complaint must seek redress through the President.

13. Pupils may write their names on the title pages of their books, but not otherwise mark or deface them.

14. Teachers and pupils shall not be allowed to accompany each other as escorts.

15. Young men and young ladies shall not be allowed to accompany or communicate with each other in any way during session of the school except at stated intervals.

16. All pupils are requested to go directly to and from school, and absolutely no loitering on the streets is allowed; no visiting or loitering in or around the stores, in crowds, or otherwise. If it is the desire of parents or guardian that pupils be sent to town on an errand in a business way, such is excusable through parent's or guardian's request.



Catalogue of Pupils.

SENIOR CLASS.

Churvis V. Capps	Capps, Alabama.
Annie Clarke	Abbeville, Alabama.
Sterling L. Curry	Abbeville, R. F. D., Alabama.
Malissie Dunn	Abbeville, R. F. D., Alabama.
James Edward Dunn	Abbeville, R. F. D., Alabama.
Max Hardwick	Headland, Alabama.
Bessie Hudspeth	Abbeville, Alabama.
Austin H. Hawley	Abbeville, Alabama.
A. Tomlin Kendrick	Birmingham, Alabama.
J. B. Long	Abbeville, Alabama.
Charles T. Laney	Abbeville, Alabama.
Bertha Orr	Clayton, Alabama.
Sellers Riley	Newton, Alabama.
Grover Reeder	Blue Springs, Alabama.
MacCrelous Sporman	Headland, Alabama.
Lloyd Warr	Abbeville, Alabama.
Frances Wood	Abbeville, Alabama.

JUNIOR CLASS.

Lester Corbitt	Abbeville, Alabama.
Raymond Corbitt	Abbeville, Alabama.
Thurman Campbell	Abbeville, R. F. D., Alabama.
Mays Clenney	Abbeville, R. F. D., Alabama.
Lonie Capps	Capps, Alabama.
James Davis	Abbeville, Alabama.
Wiley Deal	Slocomb, Alabama.
Oyd Folkles	Ashford, Alabama.
Yancey Fleming	Abbeville, R. F. D., Alabama.
E. M. Gregory	Dothan, Alabama.
Erie Hutto	Abbeville, Alabama.
John I. Jackson	Abbeville, R. F. D., Alabama.
Mason Lynn	Abbeville, R. F. D., Alabama.
James Moring	Abbeville, R. F. D., Alabama.
Irene Moring	Abbeville, R. F. D., Alabama.

E. W. Moring	Abbeville, R. F. D., Alabama.
Mary McDaniel	Abbeville, Alabama.
Clayton Reynolds	Clopton, Alabama.
Frank Rish	Abbeville, R. F. D., Alabama.
Lamar Stephens	Louisville, Alabama.
James Steagall	Abbeville, Alabama.
James Tiller	Abbeville, Alabama.
F. L. Tucker	Dothan, Alabama.
Alto Whitehurst	Abbeville, R. F. D., Alabama.
Sam Wood	Abbeville, Alabama.
S. P. Whitehead	Abbeville, R. F. D., Alabama.
Vernon Whitehead	Abbeville, R. F. D., Alabama.
Carrie Wright	Abbeville, Alabama.
Earnest Williams	Abbeville, R. F. D., Alabama.

SOPHOMORE CLASS.

Jessie M. Adams	Abbeville, R. F. D., Alabama.
Grady Adams	Abbeville, R. F. D., Alabama.
Clee Barnes	Abbeville, R. F. D., Alabama.
Quincey Burnes	Graceville, Florida.
Willie Bradley	Abbeville, Alabama.
Mary Blacklidge	Abbeville, Alabama.
Malcolm Box	Graceville, Florida.
Vann Capps	Blackfoot, Idaho.
Hinton Capps	Capps, Alabama.
Eugene Curry	Abbeville, R. F. D., Alabama.
A. L. Calhoun	Grimes, Alabama.
Benj. Ebird	Abbeville, R. F. D., Alabama.
Eva Faulk	Abbeville, Alabama.
Versia Freeman	Abbeville, Alabama.
Mary Fleming	Abbeville, R. F. D., Alabama.
Albert Grantham	Newville, Alabama.
Irene Hendley	Abbeville, Alabama.
John Howell	Baker Hill, Alabama.
Arrington Hendley	Abbeville, Alabama.
Fred Hardwick	Headland, Alabama.
Gunby Jordan	Cowarts, Alabama.
Benamin Lingo	Edwin, Alabama.
Laura Lindsay	Capps, Alabama.
T. S. Moring	Abbeville, R. F. D., Alabama.

Clarence Murphy	-----	Abbeville, R. F. D.,	Alabama.
Dudley Murphy	-----	Abbeville, R. F. D.,	Alabama.
Lucy McLain	-----	Abbeville,	Alabama.
ane McLain	-----	Abbeville,	Alabama.
Bertha Nordan	-----	Abbeville,	Alabama.
Malcolm Roberts	-----	Headland,	Alabama.
Horace Stokes	-----	Abbeville,	Alabama.
Hettie Sanders	-----	Clopton,	Alabama.
Lloyd Sanders	-----	Clopton,	Alabama.
Eugene Sanders	-----	Abbeville,	Alabama.
Mary Beatrice Talley	-----	Abbeville,	Alabama.
Kathleen Vann	-----	Abbeville,	Alabama.
Mary Clint Wells	-----	Abbeville,	Alabama.
Walter Wright	-----	Abbeville,	Alabama.
Hettie Wright	-----	Abbeville, R. F. D.,	Alabama.
Robert Watford	-----	Abbeville, R. F. D.,	Alabama.
Jesse Ward	-----	Capps,	Alabama.

FRESHMAN CLASS.

Grover Arnold	-----	Abbeville, R. F. D.,	Alabama.
Quincy Barnes	-----	Abbeville, R. F. D.,	Alabama.
Louise Bethune	-----	Abbeville,	Alabama.
Rathma Clark	-----	Abbeville,	Alabama.
Maud Corbitt	-----	Abbeville,	Alabama.
Maggie Grouby	-----	Abbeville, R. F. D.,	Alabama.
Roy Griffin	-----	Newville,	Alabama.
Joseph Griffin	-----	Newville,	Alabama.
Perry Grant	-----	Louisville,	Alabama.
Lucile Hawley	-----	Abbeville,	Alabama.
Coral Hutto	-----	Abbeville, R. F. D.,	Alabama.
John Holland	-----	Abbeville,	Alabama.
James Hendley	-----	Montgomery,	Alabama.
George Kirkland	-----	Abbeville,	Alabama.
Rufus Orr	-----	Abbeville,	Alabama.
William Price	-----	Abbeville, R. F. D.,	Alabama.
Susie Belle Rollins	-----	Chipley,	Florida.
Helen Solomon	-----	Abbeville,	Alabama.
Lucile Solomon	-----	Abbeville,	Alabama.
Reuben Sachar	-----	Abbeville,	Alabama.
Rosalie Smith	-----	Graceville,	Florida.

William Steagall	Abbeville, Alabama.
Emmett Strickland	Abbeville, R. F. D., Alabama.
Harvey Searcy	Abbeville, Alabama.
Daniel Vann	Abbeville, Alabama.
Mary Windham	Abbeville, Alabama.
Bryant Whitehurst	Abbeville, R. F. D., Alabama.
Robert Wood	Abbeville, Alabama.
Frances Warr	Abbeville, Alabama.
William Weems	Abbeville, Alabama.
Sallie Wright	Abbeville, R. F. D., Alabama.
Ila Ward	Capps, Alabama.
Georgia Walden	Abbeville, R. F. D., Alabama.

SIXTH GRADE.

William Bradley	Abbeville, Alabama.
Jean Chambliss	Abbeville, Alabama.
J. B. Hendley	Abbeville, Alabama.
Harry Jackson	Abbeville, R. F. D., Alabama.
Eva Gregory	Abbeville, Alabama.
Emma Murphy	Abbeville, R. F. D., Alabama.
Ethel Murphy	Abbeville, R. F. D., Alabama.
Maud Murphy	Abbeville, R. F. D., Alabama.
Mary Parker	Abbeville, Alabama.
Meyer Sachar	Abbeville, Alabama.
Pearl Tiller	Abbeville, Alabama.

FIFTH GRADE.

Pearl Bethune	Abbeville, Alabama.
Ewell Barnes	Abbeville, R. F. D., Alabama.
Albert Davis	Abbeville, Alabama.
Luther Danzey	Abbeville, R. F. D., Alabama.
Robert Espy	Abbeville, Alabama.
Gus Grouby	Abbeville, R. F. D., Alabama.
Dot Gregory	Abbeville, Alabama.
Dewey Griffin	Abbeville, R. F. D., Alabama.
Hattie Hendley	Abbeville, Alabama.
Kate Hendley	Montgomery, Alabama.
Clyde Hutto	Abbeville, Alabama.
Stuart Jackson	Abbeville, R. F. D., Alabama.
Phipps Kennedy	Abbeville, Alabama.

William Kennedy	Abbeville, Alabama.
Joseph Kraselsky	Abbeville, Alabama.
Edith Kraselsky	Abbeville, Alabama.
T. J. Howerton	Abbeville, Alabama.
Hazel Moring	Abbeville, R. F. D., Alabama.
William McLain	Abbeville, Alabama.
Ethel Parker	Abbeville, Alabama.
Bertha Summerford	Abbeville, Alabama.
Daisy Ward	Abbeville, Alabama.

FOURTH GRADE.

Maree Bland	Abbeville, Alabama.
Lewey Corbitt	Abbeville, Alabama.
Rupert Espy	Abbeville, Alabama.
C. B. Galloway	Abbeville, Alabama.
Stella Hollingsworth	Abbeville, Alabama.
Ruby Johnston	Abbeville, Alabama.
Henry Laney	Abbeville, Alabama.
Mary Miller	Abbeville, Alabama.
Lucile McDaniel	Abbeville, Alabama.
Burdett Mathison	Abbeville, Alabama.
Bertram Mathison	Abbeville, Alabama.
Wattie Nordan	Abbeville, Alabama.
Willie Newman	Abbeville, Alabama.
Billie Parker	Abbeville, Alabama.
Robert Parker	Abbeville, Alabama.
Mary Roberts	Abbeville, Alabama.
Edward Simonton	Abbeville, Alabama.
Emmett Solomon	Abbeville, Alabama.
Lena Sæchar	Abbeville, Alabama.
Lucy Summerford	Abbeville, Alabama.
Roy Whitehurst	Abbeville, R. F. D., Alabama.
Robbie C. Wood	Abbeville, Alabama.

THIRD GRADE.

Harry Blalock	Abbeville, Alabama.
Gertha Chambliss	Abbeville, Alabama.
Carrie Carr	Abbeville, Alabama.
John Corbitt	Abbeville, Alabama.

Homer Carr	Abbeville,	Alabama.
J. D. Griffin	Abbeville,	Alabama.
Lollie O. Howerton	Abbeville,	Alabama.
Joseph Hendley	Montgomery,	Alabama.
Neile Miller	Abbeville,	Alabama.
Ben Moring	Abbeville,	Alabama.
Verna Nordan	Abbeville,	Alabama.
Vann Owens	Abbeville,	Alabama.
Carolyn Pollard	Abbeville,	Alabama.
Willie Roberts	Abbeville,	Alabama.
Ruby Solomon	Abbeville,	Alabama.
Ressie Summerford	Abbeville,	Alabama.
Arthur Searcy	Abbeville,	Alabama.
Dan Gordon Steagall	Abbeville,	Alabama.
Juanita Stokes	Abbeville,	Alabama.
Ruth Terry	Abbeville, R. F. D.,	Alabama.
Annie Belle Trawick	Abbeville, R. F. D.,	Alabama.

SECOND GRADE.

Kathleen Armstrong	Abbeville, R. F. D.,	Alabama.
W C. Bethune	Abbeville,	Alabama.
Laura Bradley	Abbeville,	Alabama.
Lee Bland	Abbeville,	Alabama.
Robert Bland	Abbeville,	Alabama.
Robert Chambliss	Abbeville,	Alabama.
Hobson Davis	Abbeville,	Alabama.
Annie Elkins	Abbeville,	Alabama.
William Freeman	Abbeville,	Alabama.
Hinton Gregory	Abbeville,	Alabama.
Minnie Gable	Abbeville,	Alabama.
George Hollingsworth	Abbeville,	Alabama.
Donie Howerton	Abbeville,	Alabama.
Reba Jackson	Abbeville,	Alabama.
Mattie Lou Kennedy	Abbeville, R. F. D.,	Alabama.
Una McDaniel	Abbeville,	Alabama.
Anna Reba McClellan	Abbeville,	Alabama.
Louise Summerford	Abbeville,	Alabama.
Marie Terry	Abbeville, R. F. D.,	Alabama.
Marcus Windham	Abbeville,	Alabama.

FIRST GRADE.

Ed Kirkland	Abbeville, Alabama.
John F. Bland	Abbeville, Alabama.
Bryant Clark	Abbeville, Alabama.
Yancey Gregory	Abbeville, Alabama.
Mack Gregory	Abbeville, Alabama.
Earl Hollingsworth	Abbeville, Alabama.
Cornelia Hickman	Abbeville, Alabama.
Fred Johnson	Abbeville, Alabama.
Rebecca Kirkland	Abbeville, Alabama.
Eric Moring	Abbeville, R. F. D., Alabama.
Ruby Nordon	Abbeville, Alabama.
Murphy Nobles	Abbeville, Alabama.
George Newman	Abbeville, Alabama.
Lucious Nichols	Abbeville, Alabama.
Louise Owens	Abbeville, Alabama.
Edna Roberts	Abbeville, Alabama.
Franklin Robbins	Abbeville, Alabama.
Holley Summerford	Abbeville, Alabama.
Alberta Steagall	Abbeville, Alabama.
Willie Solomon	Abbeville, Alabama.
Meyer Sanders	Abbeville, Alabama.
Pearla Trawick	Abbeville, R. F. D., Alabama.
Frank Windham	Abbeville, Alabama.

MUSIC DEPARTMENT.

PIANO.

Marie Bland	Edith Kraselsky
Louise Bethune	Emma Murphy
Mary Blackledge	Ethel Murphy
Amie Clark	Maud Murphy
Rathma Clark	Mary Miller
Gertha Chambliss	Neile Miller
Mays Clenny	Irene Morning
Lonie Capps	Willie Newman
Rupert Espy	Bertha Nordan
Teance Espy	Julia Norton
Albert Grantham	Clayton Reynolds
Minnie Gable	Rosalie Smith
Maggie Grouby	Lena Sachar
Coral Hutto	Willie Steagall
Bessie Hudspeth	Eloise Searcy
Lucile Hawley	Mary Windham
Lollie Howerton	Carrie Wright
Gunby Jordan	Mary Welis

VOICE.

Bessie Hudspeth	Eloise Searcy
Bertha Orr	Hettie Wright.

GIRL'S GLEE CLUB.

Lonie Capps	Mary McLain
Malissie Dunn	Bertha Orr
Bessie Hudspeth	Clayton Reynolds
Irene Hendley	Helen Solomon
Lucile Hawley	Hettie Wright
Coral Hutto	Carrie Wright
Gunby Jordan	Frances Wood

BOYS GLEE CLUB.

W. W. Dawkins	Dudley Murphy
J. E. Dunn	James Moring
Wiley Deal	Rufus Orr
R. H. Freeman	Sellers Riley
Albert Grantham	James Steagall
Arrington Hendley	Lester Tucker
Albert Kirkland	Robert Wells
Joe McLendon	Austin Hawley

EXPRESSION DEPARTMENT.

Martha Armstrong	James Moring
Lee Bland	Mary McLendon
Mary Blacklidge	Clarence Murphy
Malcolm Box	George Newman
Kate Blacklidge	Willie Newman
Annie Clark	Julia Norton
Churviss Caps	Bertha Orr
Hinton Capps	Louise Owens
Mays Clenny	Carolyn Pollard
J. Edward Dunn	Sellers Riley
Malissie Dunn	Frank Rish
Ward Espy	Juanita Stokes
Yancey Fleming	Horace Stokes
Albert Grantham	Rosalie Smith
Gus Grouby	Mack Sporman
Maggie Grouby	Reuben Sachar
Early Gregory	Lamar Stephens
Perry Grant	James Tiller
Arrington Hendley	Sam Wood
James Hendley	Frances Wood
Erie Hutto	Mary Windham
Max Hardwick	Alto Whitehurst
Gunby Jordan	Patrick Whitehead
Rebecca Kirkland	Sallie Wright
Irene Moring	Hettie Wright.

PHYSICAL CULTURE CLASS.

Lee Bland
Mary Blacklidge
Kate Blacklidge
Laura Bradley
Annie Clark
Gertha Chambliss
Malissie Dunn
Ward Espy
Maggie Grouby
C. B. Galloway
Erie Hutto
Bessie Hudspeth
Gunby Jordan
Rebecca Kirkland
Henry Laney
Irene Moring
Una McDaniel
Mary McLendon

Willie Newman
George Newman
Lucius Nichols
Julia Norton
Bertha Orr
Louise Owens
Vann Owens
Carolyn Pollard
Rosalie Smith
Dan Gordon Steagall
Alberta Steagall
Arthur Searcy
Frances Wood
Mary Windham
Sallie Wright
Hettie Wright
Robbie Wood.

