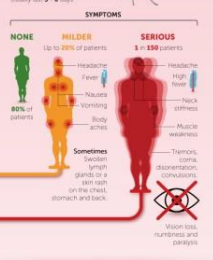
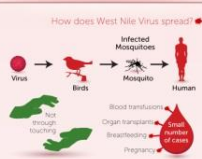
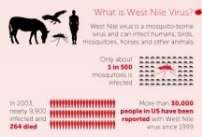
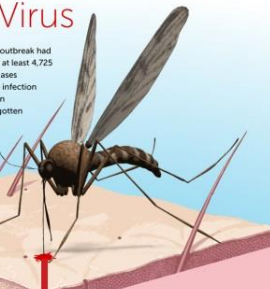


West Nile Virus

As of October 23, 2012, a West Nile Virus outbreak had reached 48 states, killing 219 people with at least 4,725 confirmed cases, the highest number of cases reported since 2003. West Nile Virus is an infection transmitted by mosquitoes, and more than 30,000 people in the United States have gotten sick with West Nile Virus since 1999. Find more about this illness and its outbreak from this infographic.



SOURCES:
http://www.cdc.gov/nczod/diseases/zoonotic/d/nw/2012_westnile.html
http://www.cdc.gov/flu/nczod/diseases/zoonotic/d/nw/2012_westnile.html
http://www.cdc.gov/nczod/diseases/zoonotic/d/nw/2012_westnile.html
http://www.cdc.gov/nczod/diseases/zoonotic/d/nw/2012_westnile.html
<http://www.meds.com>



Using Infographics to Teach Source Evaluation to Biology Freshmen

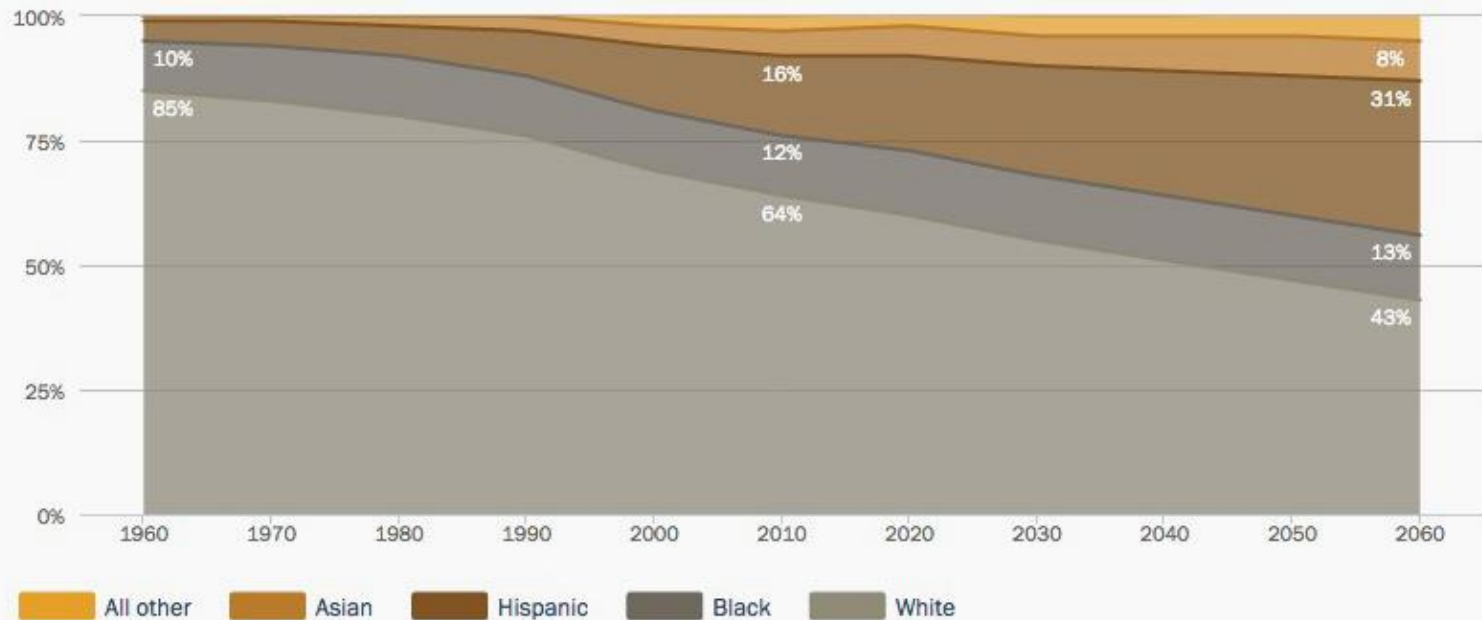
Patricia Hartman
Reference & Instruction Librarian
Auburn University Libraries

Sharon Roberts
Associate Professor
Department of Biological Sciences

The importance of careful construction...

Changing Face of America

Percent of total U.S. population by race and ethnicity, 1960-2060



Dr. Sharon Roberts



UNIV 1100: Disease Hunters

- First year seminar course
- Biology learning community
- 1 credit hour
- Assignments designed to introduce students to campus resources

Engaged Active Learning Space (EASL) in the Sciences Center Classroom Building



How to fit in?

- No writing assignments
- Working toward standardized IL program



Visual Literacy

Learning Outcomes

1. Students are able to apply evaluative criteria to infographic sources in order to judge accuracy, bias, and quality of infographics
2. Students are able to locate appropriate data sources in order to create their own infographics.

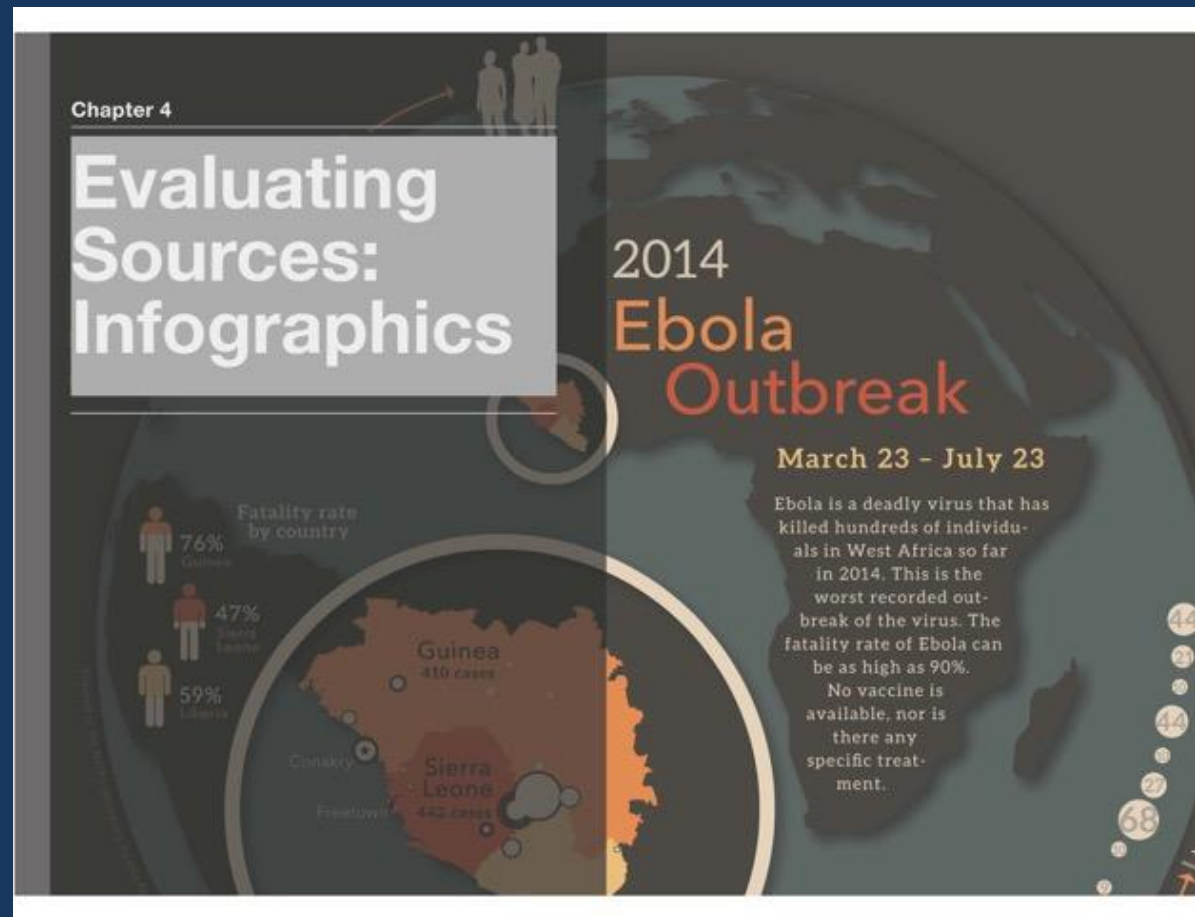
Apply

Evaluate

Read



Read



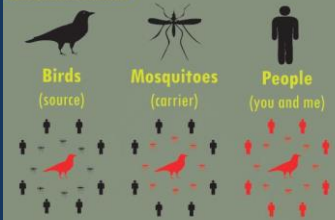
WHO, WHAT, WHEN, and WHERE

WEST NILE VIRUS

75% OF WEST NILE INFECTIONS OCCUR AFTER AUGUST 1st

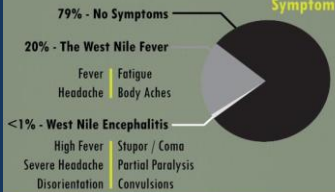
50+ AGE OF ADULTS AT THE GREATEST RISK FOR SERIOUS INFECTION

WHO ARE THE PLAYERS?



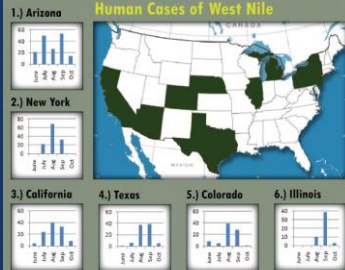
WHAT IS WEST NILE VIRUS?

Distribution of West Nile Symptoms

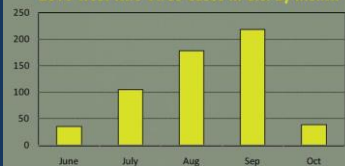


WHEN & WHERE

2010's Top 10 States With Confirmed Human Cases of West Nile



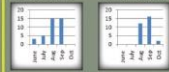
2010 West Nile Virus Cases in U.S. by Month



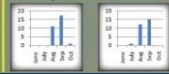
References

West Nile Virus | Mayo Clinic
<http://www.mayoclinic.com/health/west-nile-virus>
 New York City Department of Health
http://www.nyc.gov/html/doh/html/about/doh_west_nile_virus.shtml
 USGS | Disease Maps - West Nile Virus
<http://disease-maps.usgs.gov/>

7.) Nebraska 8.) New Jersey



9.) Michigan 10.) Louisiana



www.OriginalBugPatch.com

Evaluate

- Quick lecture (recap)
- Group work

WEST NILE VIRUS IN LOUISIANA

Each year, Louisiana is hit hard by the West Nile Virus. Find out which areas are hardest hit, how the virus spreads, who is at the risk and what you can do to protect yourself.

WHAT IS IT?



A deadly virus that spreads through mosquito bites and can infect: **humans, birds, horses**

HOW IS IT SPREAD?

It has spread globally and became an increasing problem in the United States, with over 30,000 Americans infected since 1999.



WHAT IS THE WORST TIME OF THE YEAR?



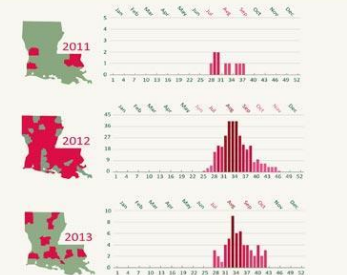
WHO IS AT RISK?

Don't let your guard down - Everyone is at risk, regardless of age or whether or not there are recorded cases in your parish.



Statistics (1937-today) Louisiana specific:

In 2013 only 10 states had more cases than Louisiana. Louisiana had the 11th most cases of any state.



HOW CAN YOU PROTECT YOURSELF?

- Don't rely on public mosquito control for your safety
- Use bug repellent that contains DEET/control company
- Freshen ponds and swimming pools
- Keep roof gutters clean
- Consider mosquito treatment for your yard from a pest control company
- Dispose of unused cans, pots or other containers that are not being used around your property
- Remove sources of standing water from your yard
- Be cautious at dawn and dusk

SOURCES: CDC.gov, Disease-Maps.USGS.gov, DHH.Louisiana.gov, MayoClinic.org

dugas PEST CONTROL

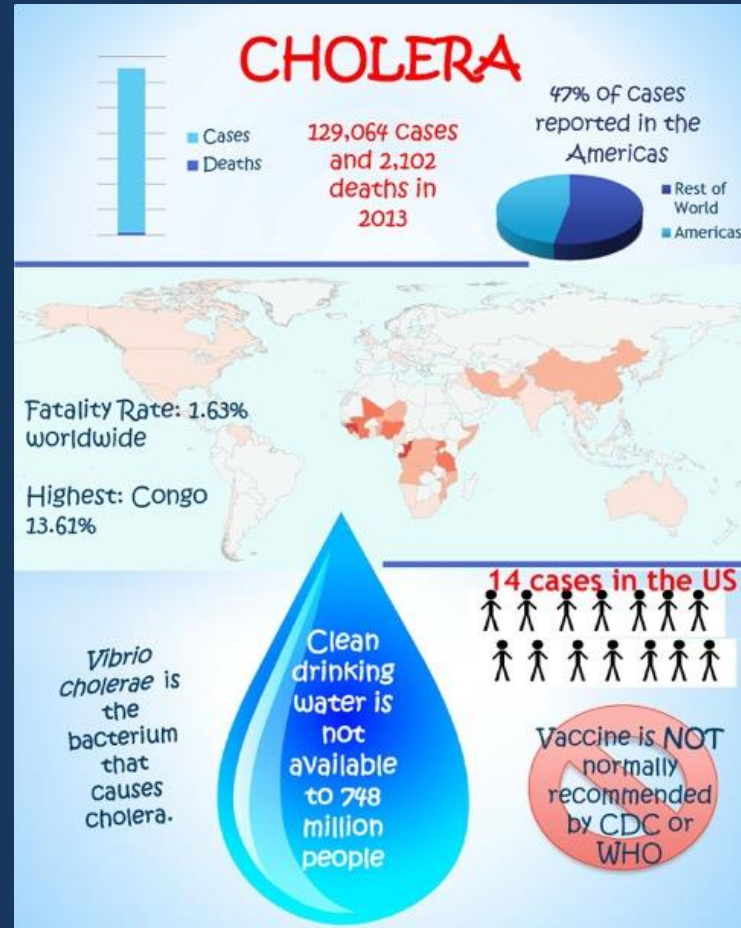
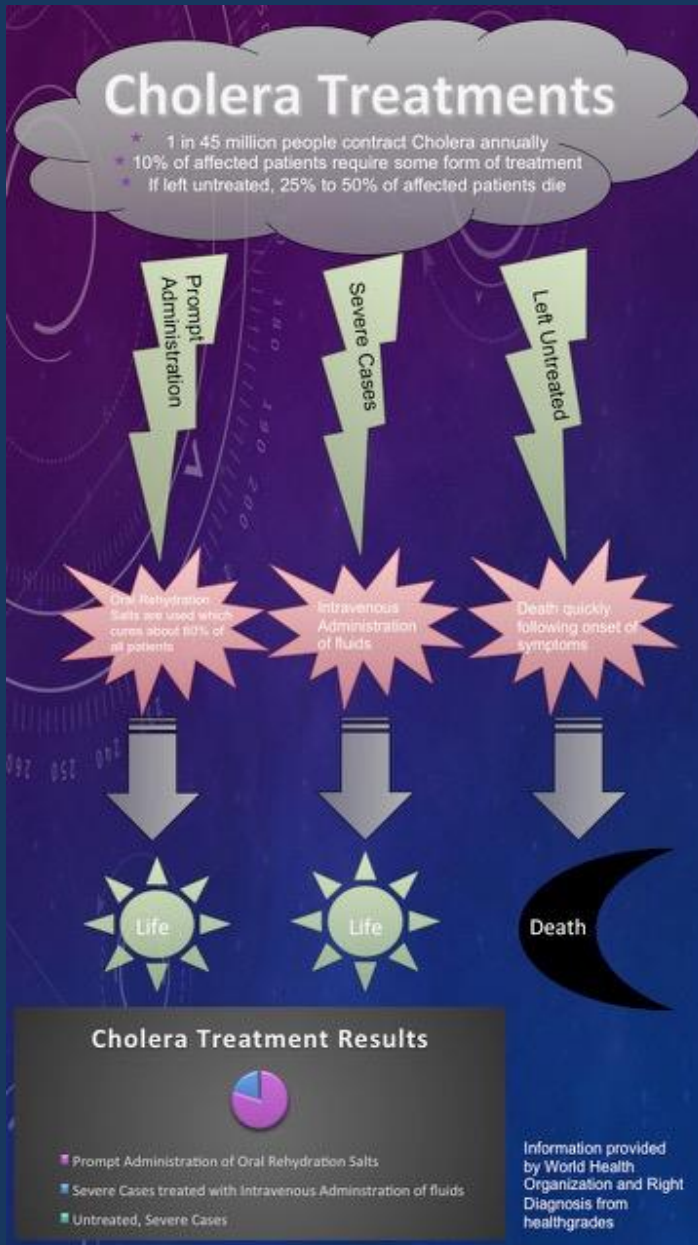
AUTHOR: www.dugaspestcontrol.com

Apply

- Work with a partner to create your own infographic



Sample student infographics



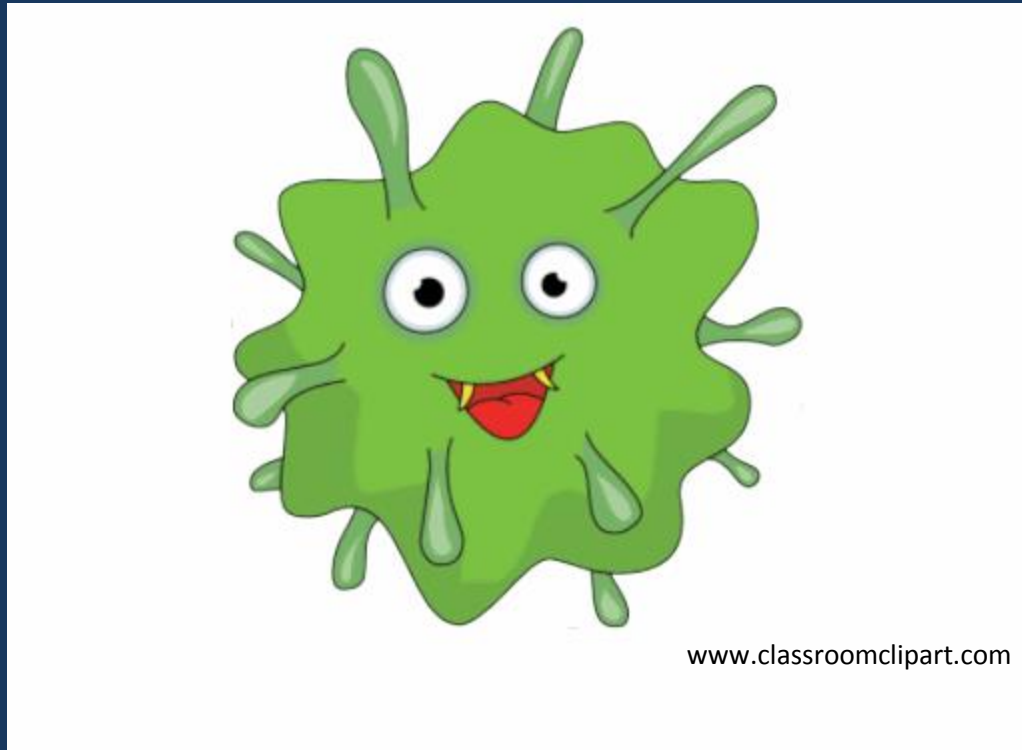
Student outcomes

- Critical thinking skills
 - Introduction to visual literacy
 - Application of infographic evaluation standards to their own work
- Early contact with subject librarian
- Use of library services
 - Poster printing

Other lessons learned

- Did they read ahead of time???
- Be flexible
- Lots of opportunity in EASL classrooms
 - Recognize what's feasible
- Librarian-faculty collaboration
- Seek out other UNIV 1100 LCs in my subject specialty

Thank you!



patricia.hartman@auburn.edu